

Focus  
**Fabricators**

Topics  
Products  
Services

2025



# Contents

Introduction	4
Adaptive reuse	6
Decarbonisation	24
Fire protection	36
High security	46
Residential	54
Schüco Perfect	68
Automation	78
Features	84
Services	96
Contact/Imprint	106



schüco

# Introduction

## Focusing on your objectives

The construction industry is facing huge challenges. One key issue is the shortage of skilled workers, which makes it harder to find qualified personnel and, in turn, leads to project delays. Material costs are also rising as a result of global supply chain problems and inflationary trends, which is encumbering the costing and implementation of building projects. Added to this is the need to build in a more sustainable way, which requires the use of innovative technologies and compliance with stricter environmental policies.

As a partner, you know how crucial it is to have reliable, high-quality systems and solutions that make you day-to-day work easier while meeting the highest standards. Schüco provides exactly that – innovative products and tailored solutions to make your projects even more efficient and successful.

This brochure contains information about the latest developments and technologies that specifically target the current demands of fabrication. You can also find out how to reduce renovation risks and increase the efficiency of a building project with Schüco Value Up, and how we can drive forward decarbonisation together with Schüco Carbon Control by minimising carbon emissions across all phases of the construction. Furthermore, we focus on hot topics such as fire protection, high security, residential projects, modular construction and automation – so that you can implement all of your building projects reliably and efficiently. With Schüco, you benefit from close collaboration, reliable products and a comprehensive range of services and training opportunities.

Together we can create the buildings of tomorrow.

<b>Topic</b>	<b>8</b>
<b>Products</b>	
<b>Schüco aluminium systems</b>	<b>12</b>
<b>Schüco PVC-U systems</b>	<b>17</b>
<b>Schüco Jansen Steel Systems</b>	<b>20</b>
<b>Services</b>	<b>21</b>



# Adaptive reuse



SCHÜCO  
VALUE  UP  
Upgrading existing structures



# Renovation: reduce risks, increase efficiency

# With Schüco Value Up, every renovation can be reliable and cost-effective. Our tailored solutions bring together Schüco products and services for all types of renovation.

From refurbishments through to the replacement of units, Schüco Value Up enables efficient, low-risk execution, even while the building is still in use.

**M**ore than 85% of today's buildings will still be standing in 30 years. This makes maintaining and increasing the value of existing properties a central focus. At the same time, topics like climate protection, scarcity of resources and new concepts for use demand innovative approaches for adaptive reuse projects. The challenge is that existing buildings need to be modernised to be more energy efficient, adapted to changing climate conditions and renovated so that they remain economically attractive for the long term. Sustainability requirements, cost efficiency and design ambitions must be reconciled, which is a challenge for all the key players in the construction industry.

## **New framework, new opportunities**

The EU has set clear objectives with the aim of being carbon neutral by 2050. Almost 75% of existing buildings in the EU are considered to be inefficient in terms of energy and, without renovation, are an obstacle to achieving climate targets. Subsidy programmes and energy efficiency standards offer incentives to carry out improvements. This political momentum makes existing buildings a dynamically growing market that offers opportunities to investors, architects, fabricators and building operators alike.

## **Product solutions and services across all phases of the renovation process**

Every renovation is unique. Unforeseen circumstances are the norm and the possibilities of the solutions are diverse and complex. That's why renovation projects require customised strategies which are tailored to the circumstances of the existing buildings. With Schüco Value Up, construction projects in existing buildings can be carried out systematically, sustainably and in a way that enhances their value. This project-specific approach for the renovation of the building envelope provides all project stakeholders with greater certainty and predictability throughout the entire process.



### **Find out more**

All the latest information about Schüco Value Up:

[www.schueco.de/cc-sanierung-en](http://www.schueco.de/cc-sanierung-en)

# Four key phases structure and optimise the entire renovation process.

## 1 Analyse to Upgrade: greater transparency in investment decisions

We analyse the building envelope precisely and make the renovation potential of a building visible and measurable for all those involved in the project. This allows them to make well-founded, economical decisions – and increase the potential value of the property in the best possible way for the long-term.



## 2 Plan to Upgrade: reduced planning complexity

We offer precise simulation and planning tools which can be used to quickly grasp complex project requirements and minimise uncertainties at an early stage. Our specialists provide support with the development of customised renovation concepts and individual solutions – in a project-specific way that is tailored to the requirements of the existing building.





### **3 Rebuild to Upgrade: greater reliability and cost- effectiveness in implementation**

We enable efficient and reliable execution of renovation projects. With our solutions for every type of renovation – from refurbishment to replacing units or a full renovation – renovation measures can be implemented in a reliable and cost-effective way. Our approach reduces costs and provides flexibility. The result is sustainable, value-enhancing solutions for the respective property.



### **4 Maintain to Upgrade: greater functionality and efficiency in building operation**

We ensure efficient operation of the building and offer digital tools and minimally invasive measures to extend the useful life of buildings while they are still in use. Our innovative systems lower operating costs, increase user comfort and improve energy efficiency, while regular maintenance and repair services guarantee the long-term preservation of the value of the property.

**Project-specific solutions make it possible to implement renovation projects not only in a reliable way with optimised processes, but also cost-effectively.**

**To help all those who maintain value to increase value.**

## Schüco AWS 90 ST.SI+ window system

# Aluminium window with steel look

- More options for use thanks to improved U values and passive house certification with new and improved insulating bars, thermally insulated centre gaskets and optimised glazing rebate insulation
- Rebate gasket optimised for fabrication with an optional corner piece
- Fittings installation with no locking bar recess on the vent enables faster fabrication and simplified, efficient fabrication of the locking bar



### Technical data

Glass or infill thicknesses

Outer frame: 33 mm to 51 mm  
Vent frame: 33 mm to 51 mm

Thermal insulation of glass  
with Psi value of 0.031 W/mK and  
 $U_g$  value of 0.5 W/(m<sup>2</sup>K)  
 $U_g$  value of 0.7 W/(m<sup>2</sup>K)  
with Psi value of 0.036 W/mK and  
 $U_g$  value of 1.0 W/(m<sup>2</sup>K)

Thermal insulation of unit (unit size W x H: 1230 mm x 1480 mm)

$U_w$  value of 0.74 W/(m<sup>2</sup>K)  
 $U_w$  value of 0.87 W/(m<sup>2</sup>K)

$U_w$  value of 1.09 W/(m<sup>2</sup>K)

Sound reduction of glass  
 $R_w$  value of glass of 32 dB  
 $R_w$  value of glass of 41 dB  
 $R_w$  value of glass of 51 dB

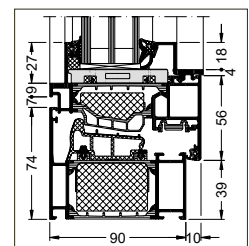
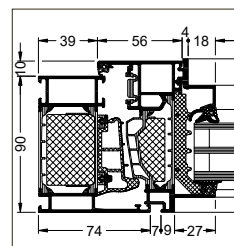
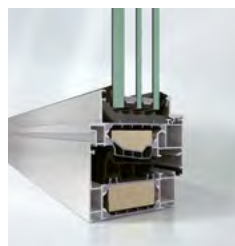
Sound reduction of unit  
 $R_w$  value of 34 dB  
 $R_w$  value of 40 dB  
 $R_w$  value of 46 dB

Burglar resistance

Up to class RC 3

Options

Ideal for renovations  
Barrier-free level thresholds  
Optimised thermal insulation



## Schüco AS FD 90.HI folding sliding system

# Maximum opening for unrestricted views

- Maximum opening of 90% ensures unrestricted views to the outside
- Units can be folded to the right, left or both sides
- Increased safety thanks to cleaning fitting and safety barrier



### Technical data

Vent sizes

Maximum size W x H: 1500 mm x 3500 mm,  
1000 mm x 2750 mm (as balcony glazing / with cleaning fitting)

Vent weights

Up to 150 kg,  
100 kg (as balcony glazing / with cleaning fitting)

Face width of vent joint

90 mm or 104 mm

Thermal insulation of glass  
with Psi value of 0.031 W/mK and  
 $U_g$  value of 0.5 W/(m<sup>2</sup>K)  
 $U_g$  value of 0.7 W/(m<sup>2</sup>K)  
with Psi value of 0.036 W/mK and  
 $U_g$  value of 1.0 W/(m<sup>2</sup>K)

Thermal insulation of unit (unit size W x H: 5000 mm x 2500 mm)

$U_w$  value of 0.81 W/(m<sup>2</sup>K)  
 $U_w$  value of 0.96 W/(m<sup>2</sup>K)

$U_w$  value of 1.20 W/(m<sup>2</sup>K)

Sound reduction of glass

$R_w$  value of glass of 32 dB  
 $R_w$  value of glass of 45 dB  
 $R_w$  value of glass of 51 dB

Sound reduction of unit

$R_w$  value of 36.6 dB  
 $R_w$  value of 45.1 dB  
 $R_w$  value of 46.6 dB

Burglar resistance

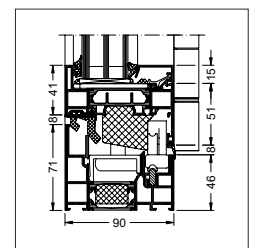
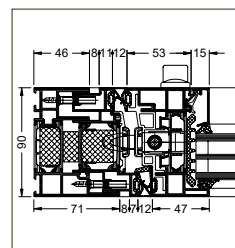
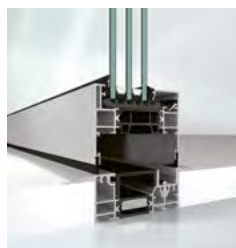
Up to class RC 2

Options

Manual operation



All the latest information:  
[www.schueco.de/as-fd-90-hi-en](http://www.schueco.de/as-fd-90-hi-en)



## Schüco AWS 75.SI+ Reno window system

# Efficient window renovation without removing the outer frame

- Less work: fewer steps and less physical work required as the old frame remains in place
- Economical window replacement: less dismantling work required inside the building thanks to special outer frame profiles
- Less dirt and noise: the work involves a reduced amount of dust and noise



### Technical data

Glass or infill thicknesses

Outer frame: 18 mm to 52 mm  
Vent frame: 18 mm to 61 mm

Thermal insulation of glass

Thermal insulation of unit  
On request

Sound reduction

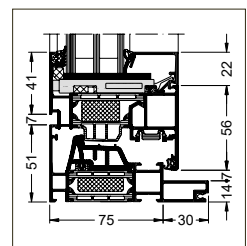
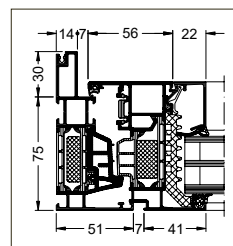
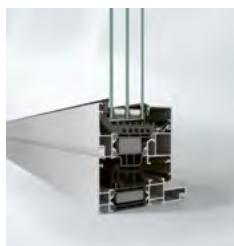
Sound reduction of unit  
On request

Burglar resistance

On request

Options

Optimised thermal insulation  
Schüco Integralmaster



## Schüco AOC 50/60 Reno façade system

# Efficient refurbishment of mullion/transom façades

- Time-saving installation of the new Schüco AOC functional layer
- Attachments to the building structure can be built over
- Pre-punched profiles: no drill holes required



### Technical data

Glass or infill thicknesses

8 mm to 70 mm

Thermal insulation of glass with Psi value of 0.064 W/mK and  
 $U_g$  value of 0.5 W/(m<sup>2</sup>K)  
 $U_g$  value of 0.7 W/(m<sup>2</sup>K)  
 $U_g$  value of 1.0 W/(m<sup>2</sup>K)

Thermal insulation of unit (unit size W x H: 1500 mm x 2800 mm)

$U_{cw}$  value of 0.66 W/(m<sup>2</sup>K) (AOC 50 Reno) and  $U_{cw}$  value of 0.7 W/(m<sup>2</sup>K) (AOC 60 Reno)  
 $U_{cw}$  value of 0.85 W/(m<sup>2</sup>K) (AOC 50 Reno) and  $U_{cw}$  value of 0.9 W/(m<sup>2</sup>K) (AOC 60 Reno)  
 $U_{cw}$  value of 1.2 W/(m<sup>2</sup>K) (AOC 50 Reno) and  $U_{cw}$  value of 1.3 W/(m<sup>2</sup>K) (AOC 60 Reno)

Sound reduction

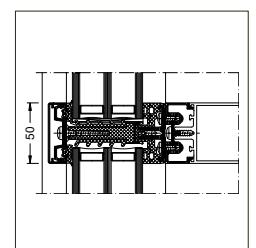
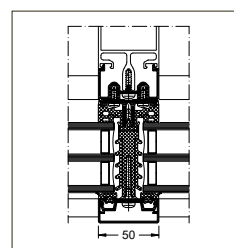
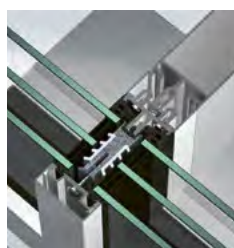
Sound reduction of unit  
 On request

Burglar resistance

On request

Options

Renovation solution for existing standard façades  
 Use of glass or panel infills as well as building-integrated photovoltaic modules  
 Easy integration of opening units and sun shading



## Schüco AF VC façade system

# Ventilated façade for renovating the building envelope

- Load-bearing structure for photovoltaic modules (Schüco BIPV), in order to utilise spandrel and opaque areas as sources of energy
- This permanently reduces the operating costs and carbon emissions
- Different fixing options for photovoltaic modules, glass, or other opaque infills, enables façades to be designed flexibly and attachments to ribbon windows and mullion/transom façades to be constructed seamlessly



### Technical data

Glass or infill thicknesses

5 mm to 18 mm

Features and benefits

Rainscreen cladding system

Four system versions:  
point fixing, full-frame fixing, two-sided fixing and concealed fixing

Infill types:  
glass, panels and building-integrated photovoltaic modules

Maximum infill dimensions with full-frame fixing and point fixing (W x H):  
1200 mm x 3600 mm or 3600 mm x 1200 mm

Maximum infill dimensions with concealed fixing (W x H):  
1800 mm x 3600 mm or 3600 mm x 1800 mm

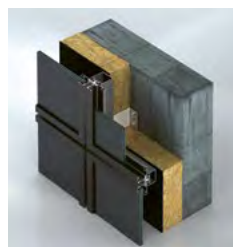
Can be combined with Schüco façade systems and window units

System versions

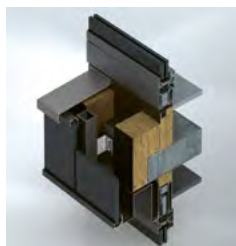
Point fixing



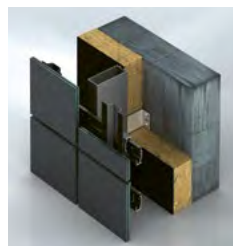
Full-frame fixing



Two-sided fixing



Concealed fixing



## Schüco FocusIng window system

# Sustainable PVC-U window system

- Sustainable profile system due to the inner core made from recycled material, the minimal number of components and its economical design
- Compatible with the Schüco LivIng and Schüco CT 70 systems, ensuring lower storage and transport costs thanks to the use of identical parts
- Available in four profile colours (base material): white, cream, caramel and dark grey



### Technical data

Glass or infill thicknesses

Thermal insulation of glass  
with Psi value of 0.030 W/mK and  
U<sub>g</sub> value of 0.5 W/(m<sup>2</sup>K)  
U<sub>g</sub> value of 0.7 W/(m<sup>2</sup>K)

Sound reduction of glass  
R<sub>w</sub> value of glass of 37 dB  
R<sub>w</sub> value of glass of 42 dB  
R<sub>w</sub> value of glass of 45 dB  
R<sub>w</sub> value of glass of 50 dB

Burglar resistance

Options

Outer frame: 10 mm to 48 mm  
Vent frame: 16 mm to 54 mm

Thermal insulation of unit (unit size W x H: 1230 mm x 1480 mm)

U<sub>w</sub> value of 0.77 W/(m<sup>2</sup>K)  
U<sub>w</sub> value of 0.90 W/(m<sup>2</sup>K)

Sound reduction of unit  
R<sub>w</sub> value of 41 dB  
R<sub>w</sub> value of 44 dB  
R<sub>w</sub> value of 45 dB  
R<sub>w</sub> value of 48 dB

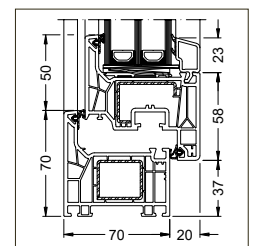
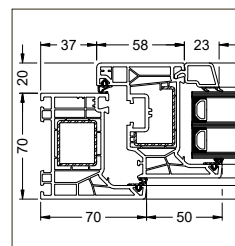
Up to class RC 2

Barrier-free level or standard threshold (20 mm)

Surface finish options  
Integrated ventilation solution  
Smart home compatible  
Can also be used as a window door



All the latest information:  
[www.schueco.de/focusing-qr-en](http://www.schueco.de/focusing-qr-en)



## Schüco Symbiotic window system

# Hybrid design system for PVC-U windows

- Same design details as Schüco Living for maximum fabrication efficiency
- Two fabrication options: mechanical connection of the PVC-U frame to the aluminium frame or weldable option available for maximum fabrication efficiency
- Optional use of insulating attachment profiles in the outer frame for the best thermal insulation properties



### Technical data

Glass or infill thicknesses

Outer frame: 40 mm to 54 mm  
Vent frame: 40 mm to 54 mm

Thermal insulation of glass  
with Psi value of 0.030 W/mK and  
U<sub>g</sub> value of 0.5 W/(m<sup>2</sup>K)  
U<sub>g</sub> value of 0.7 W/(m<sup>2</sup>K)

Thermal insulation of unit (unit size W x H: 1230 mm x 1480 mm)

U<sub>w</sub> value of 0.73 W/(m<sup>2</sup>K)  
U<sub>w</sub> value of 0.90 W/(m<sup>2</sup>K)

Sound reduction of glass  
R<sub>w</sub> value of glass of 36 dB  
R<sub>w</sub> value of glass of 42 dB  
R<sub>w</sub> value of glass of 45 dB  
R<sub>w</sub> value of glass of 50 dB

Sound reduction of unit  
R<sub>w</sub> value of 35 dB  
R<sub>w</sub> value of 44 dB  
R<sub>w</sub> value of 46 dB  
R<sub>w</sub> value of 48 dB

Burglar resistance

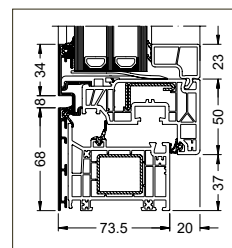
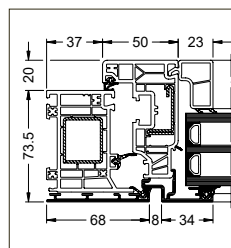
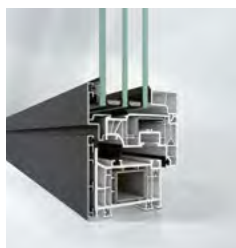
Up to class RC 2

Options

Barrier-free level or standard threshold (20 mm)  
Surface finish options  
Safety barrier  
Integrated ventilation solution  
Can also be used as a window door  
Integralmaster  
Smart home compatible



All the latest information:  
[www.schueco.de/symbiotic-qr-en](http://www.schueco.de/symbiotic-qr-en)



## Schüco EasySlide – New Generation

# Optimised PVC-U lift-and-slide door

- Economical and efficient fabrication thanks to a limited number of different components, no need for additional machining for roller carriages, and profile lengths that have been optimised for cutting
- Efficient installation with simple 90° cuts and joining without additional connecting components
- Also available with optional handle recoil damping, monitoring of closing and SmartClose function



### Technical data

Vent sizes

Maximum size W x H: 3228 mm x 2476 mm

Vent weights

Up to 300 kg

Face width of interlock section

108 mm

Thermal insulation of glass  
with Psi value of 0.030 W/mK and  
 $U_g$  value of 0.7 W/(m<sup>2</sup>K)  
with Psi value of 0.032 W/mK and  
 $U_g$  value of 1.0 W/(m<sup>2</sup>K)

Thermal insulation of unit (unit size W x H: 4000 mm x 2300 mm)

$U_w$  value of 1.0 W/(m<sup>2</sup>K)

$U_w$  value of 1.3 W/(m<sup>2</sup>K)

Sound reduction of glass

$R_w$  value of glass of 34 dB

$R_w$  value of glass of 40 dB

$R_w$  value of glass of 45 dB

$R_w$  value of glass of 48 dB

Sound reduction of unit

$R_w$  value of 34 dB

$R_w$  value of 37 dB

$R_w$  value of 41 dB

$R_w$  value of 43 dB

Burglar resistance

Up to class RC 2

Options

Standard threshold (20 mm, barrier-free)

Schüco SmartClose

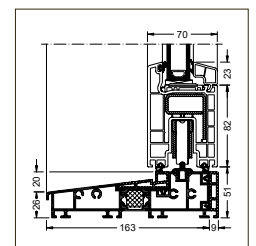
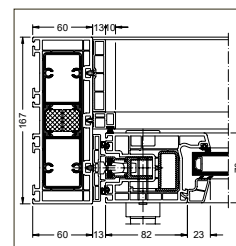
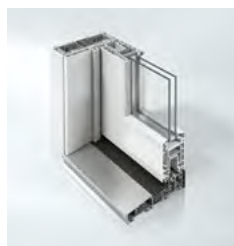
Monitoring of closing (only for type 01)

Schüco SoftLift

Schüco SoftHandle



All the latest information:  
[www.schueco.de/easyslide-qr-en](http://www.schueco.de/easyslide-qr-en)



## Jansen Finline 70 window system

# Slender steel window system with comprehensive design options

- Clip-in glazing beads make glazing easy with just a few process steps
- The energy efficiency of the profile is easily improved by means of push-in insulating bars
- The installation of the fittings is optimised by means of guide grooves for strike plates and drills guided through drilling channels



### Technical data

Glass or infill thicknesses

Outer frame: 9 mm to 54 mm  
Vent frame: 9 mm to 54 mm

Vent sizes

Minimum size W x H: 300 mm x 360 mm  
Maximum size W x H: 1000 mm x 2400 mm

Thermal insulation of glass  
with Psi value of 0.031 W/mK and  
 $U_g$  value of 0.5 W/(m<sup>2</sup>K)  
 $U_g$  value of 0.7 W/(m<sup>2</sup>K)  
 $U_g$  value of 1.0 W/(m<sup>2</sup>K)

Thermal insulation of unit (unit size W x H: 1230 mm x 1480 mm)

$U_w$  value of 0.8 W/(m<sup>2</sup>K)  
 $U_w$  value of 1.0 W/(m<sup>2</sup>K)  
 $U_w$  value of 1.3 W/(m<sup>2</sup>K)

Sound reduction of glass  
 $R_w$  value of glass of 50 dB

Sound reduction of unit  
 $R_w$  value of 50 dB

Burglar resistance

Up to class RC 2

Material

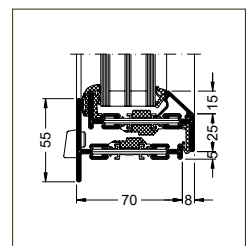
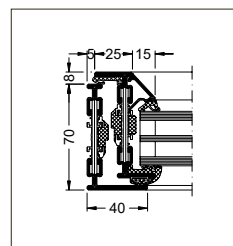
Steel

Options

Block window and double-vent outer frame design options  
Surface-mounted (traditional) or concealed (modern) fittings systems  
Profiles with or without Euro groove



All the latest information:  
[www.schueco.de/jansen-finline-70-en](http://www.schueco.de/jansen-finline-70-en)



## Recycling concepts

# Renovation planning for dismantled construction units



- Schüco consults on the planning of renovation projects and provides project-specific recycling concepts
- This free service offers added value for everyone involved in the project
- Other benefits include reliable planning and a positive impact on building certification outcomes (DGNB, LEED)

## Internet of Façades (IoF)

# Digital twin



- Digital twins of Schüco units where all the data and documents are stored, such as component specifications and details of the materials
- Provides precise information about the building's existing structures, systems and components – to help you make well-founded decisions and plans
- From 2025 Schüco products will be fitted with an IoF ID as standard – for digital, transparent building envelopes



All the latest information:  
[www.schueco.de/iof-id-fokus-en](http://www.schueco.de/iof-id-fokus-en)

## Vent replacement

# Minimally invasive refurbishment of old window systems



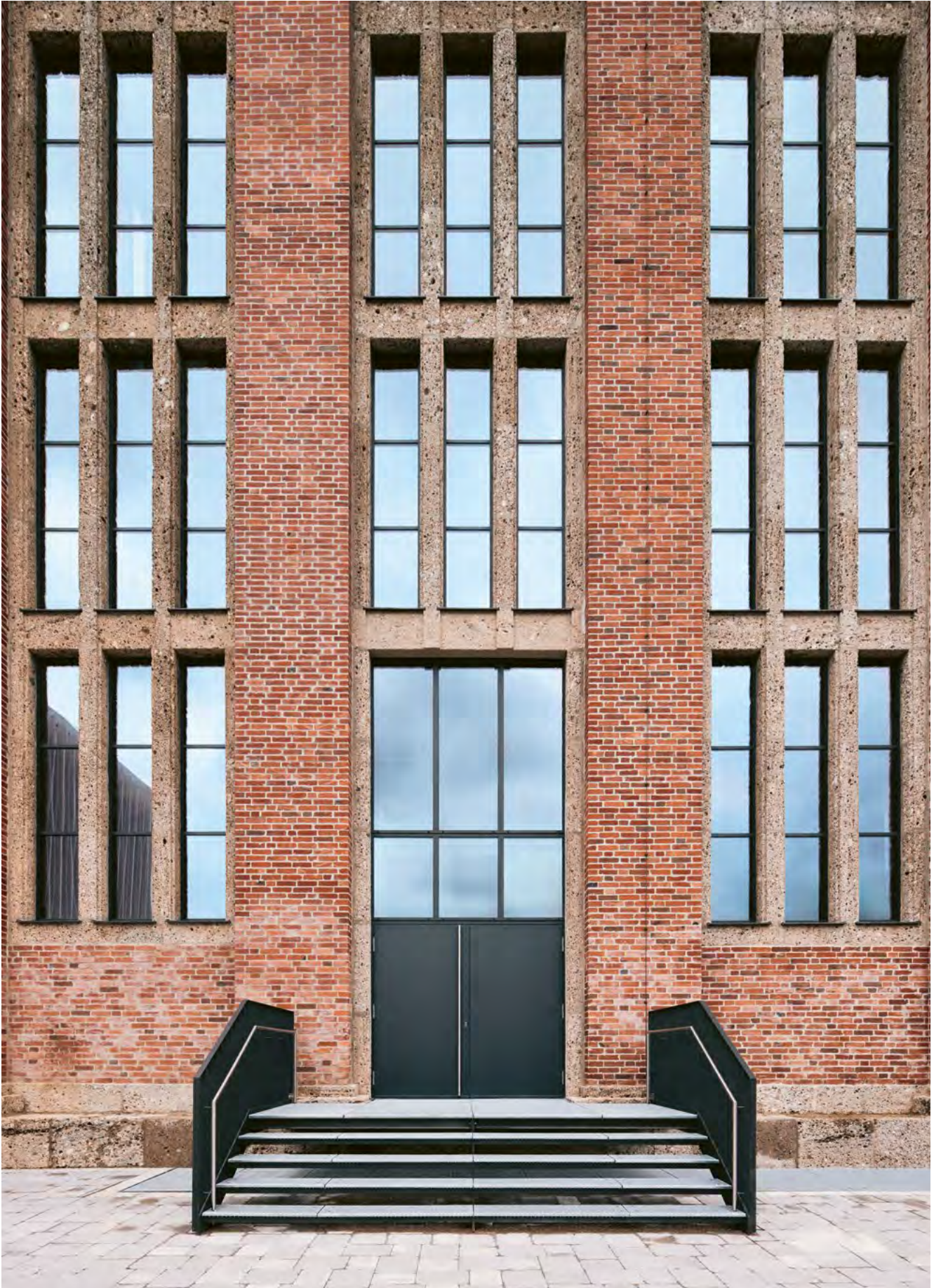
- Replacing the vents enables the energy efficiency of windows from the Royal S system generation to be brought up to today's standards
- Replacing the vents takes just a few minutes and therefore makes the duration of this construction work shorter overall
- Renovation projects that are eligible for subsidies improve the energy efficiency of old systems without affecting the attachment to the building structure

## Replacement of parts

# For windows and façades



- Schüco window and façade components can be replaced without the need for extensive planning work on the fabric of the building
- Older components like the glazing, gaskets and handles can also be replaced. This increases the service life and value retention
- The Schüco Spare Parts Shop even offers components for series from the 1970s and 1980s



Bergson Kunstkraftwerk, Munich, Germany, © Laura Thiesbrummel

<b>Topic</b>	<b>26</b>
<b>Products</b>	
<b>Schüco material grades</b>	<b>30</b>
<b>Schüco aluminium systems</b>	<b>32</b>
<b>Services</b>	<b>33</b>

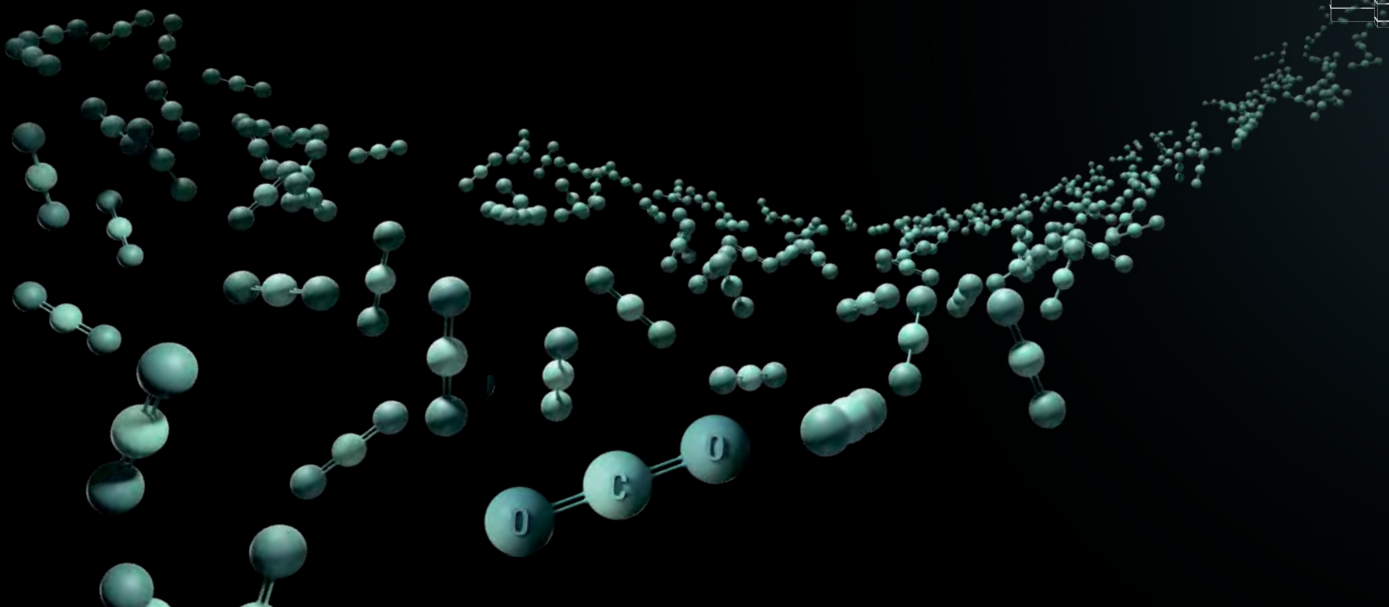
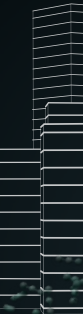


# Decarbonisation



# Reducing carbon in the building envelope

**SCHÜCO**  
**CARBON CONTROL**  
Minimising CO<sub>2</sub> in construction.



**In April 2023, Schüco introduced its modular Carbon Control product, which allows the carbon footprint of the building envelope to be significantly reduced over its entire life cycle. Since then, Schüco Carbon Control has become standard.**



Schüco Carbon Control provides you with the precise tools required to minimise the carbon emissions of the building envelope over the entire life cycle of the property.

**S**chüco Carbon Control supports everyone involved in the construction project throughout all of the individual phases: Schüco provides investors, architects and planners with advice during the planning phase by means of feasibility studies, in order to identify the best solution while taking into account the budget, carbon footprint and circularity of the materials used. Targeted specialist advice also plays a key role during the subsequent phase, where the plans are implemented by the main contractors and fabricators. This is where Schüco advises and trains the fabricators and provides support by means of appropriate machinery, software, and profiles made from materials with recycled content. For building owners and operators, Schüco Service then takes care of the maintenance, servicing, retrofitting and, for renovation projects, the analysis of the existing building. If the decision is nevertheless made to demolish the building, Schüco Carbon Control together with joint ventures such as RE:CORE ensures that the resources are fed back into the material cycle.

### New material grades set standards

In 2023, Schüco introduced two new aluminium material grades, which are now requested as standard: Low Carbon aluminium (LC) with a value of 4.47 kg CO<sub>2</sub>e per kg of aluminium and Ultra Low Carbon aluminium (ULC) with a value of 2.27 kg CO<sub>2</sub>e per kg of aluminium. The values have since been further reduced, meaning that from 2025 they stand at 3.84 kg CO<sub>2</sub>e per kg of aluminium for LC and 1.99 kg CO<sub>2</sub>e per kg of aluminium for ULC. An allotment process is used for the distribution of these two material grades.

### Almost 100% recycled aluminium

Increasing the proportion of recycled content is an important factor in the ongoing decarbonisation of our materials. At the same time, using post-consumer material is a central component in the transition to a circular construction industry. Schüco is therefore doing everything they can to introduce a new grade of aluminium that consists of almost 100% recycled aluminium. This material grade will be launched in 2025. Taking the Schüco AWS 75.SI window with the dimensions 1.23 m x 1.48 m as an example, these low carbon materials have a very positive impact. By using ULC aluminium, low carbon insulating glass and the use of PA insulating bars made from 100% recycled material, the Global Warming Potential (GWP) of this example window can be reduced by almost 50%.

### SchüCal – the ideal configurator

At the touch of a button, the calculation software SchüCal can instantly calculate how the footprint changes with the use of the new aluminium material grades. SchüCal is the digital heart of the planning and calculation process in metal fabrication. It now includes a key planning parameter for sustainability requirements, allowing the GWP to be calculated effortlessly for the purposes of easy and transparent monitoring – also taking into account the surface finish.

### PVC solutions that conserve resources

In addition to the new aluminium material grades, Schüco also offers PVC materials with recycled content. Schüco BALANCED PVC is supplied as standard at Schüco. All of the profiles in this material version are manufactured with recycled material as standard or a formulation that makes optimum use of resources in the inner core. This formulation that makes optimum use of resources only contains components that are necessary for the quality of the material, and does without colour pigments, for example, in order to conserve raw materials. RECYCLED PVC contains a guaranteed proportion of recycled material in its

inner core of between 39% and 57%, irrespective of the geometry. Some profile geometries in this material version also meet the requirement for a recycled material proportion above 55 per cent and can be used for buildings with special subsidies. With BIO-ATTRIBUTED PVC, crude oil is replaced with tall oil. This renewable, non-fossil raw material made from pine trees is a by-product of paper. Compared to PVC made from crude oil, PVC made from tall oil saves up to 90 percent CO<sub>2</sub>e in the manufacturing process for the same manufacturer. With the introduction of the Schüco Environmental Calculator in the course of 2025, Schüco will make it possible to determine the GWP value of project-specific PVC units at the touch of a button as well.

### Schüco Carbon Control in practice

Numerous projects have already been implemented using Schüco Carbon Control. One example is the renovation of the “New Ganghofer” in Munich. The façade of this building was refurbished, with 2600 window vents being replaced with new aluminium window vents with triple glazing. To prevent the grey energy in the existing building being lost, the old outer frames were retained. This meant that intervention into the fabric of the building was not required and the window vents that were removed were fed back into the material cycle, in order to ensure that as much material as possible was recycled with minimal waste. It is therefore estimated that 95% of the proportion of aluminium (approximately 43 tonnes of material), and 65% of the glazing (approximately 315 tonnes) will be recycled as part of this project. It is therefore clear that Carbon Control has established itself on the market and seamlessly links with Value Up, the new Schüco solution for value-enhancing renovations that can be reliably planned.



#### Find out more

All the latest information about Schüco Carbon Control:  
[www.schueco.de/cc-fokus-en](http://www.schueco.de/cc-fokus-en)



Schüco Carbon Control was used for the renovation of the "New Ganghofer" in Munich.

**Meet increasing carbon requirements and guarantee long-term competitiveness with Schüco Carbon Control.**

## Reducing embedded emissions: it all depends on the material

# Material grades of the Schüco aluminium profile systems

- By choosing the right materials, Schüco partners can have a positive influence on the embedded emissions in the building envelope, and therefore the carbon footprint of the property too
- Schüco offers three further material grades in addition to standard aluminium. Depending on the project specifications, it is possible to incorporate profiles with a particularly low CO<sub>2</sub> value into your planning and calculate them in SchüCal
- This is made possible by the use of recycled material as a raw material as well as green energy during the production of the aluminium



### Grades

#### Low Carbon

In 2025, Low Carbon aluminium profiles have a GWP value of 3.84 kg CO<sub>2</sub>e per kg of aluminium. In the coming years, we will gradually reduce the carbon footprint of LC aluminium.



#### Ultra Low Carbon

In 2025, Ultra Low Carbon aluminium profiles have a GWP value of 1.99 kg CO<sub>2</sub>e per kg of aluminium. In the coming years, we will gradually reduce the carbon footprint of ULC aluminium.

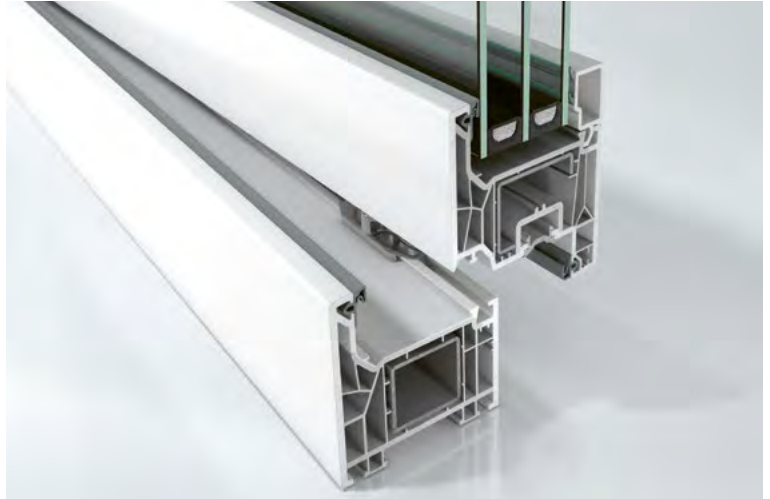


All the latest information:  
[www.schueco.de/material-en](http://www.schueco.de/material-en)

Actively influencing embedded emissions with the right materials

# Material grades of the Schüco PVC-U profile systems

- Schüco PVC-U systems have a GWP value between 0.51 and 2.30 CO<sub>2</sub> per kg of profile, depending on their design
- This is because the sustainable, reusable material has excellent recycling properties and produces low carbon emissions with multiple reuse
- Schüco PVC-U units made from sustainable PVC material versions can therefore already reduce the carbon footprint of a building when it is constructed



## Grades

### BALANCED PVC

With the standard BALANCED PVC version, the preference is to produce all profiles with a proportion of recycled material on the inside, but an inner core formulation that makes optimum use of resources is also used as an alternative. In this case, the proportion of recycled material varies between 25% and 76%. The aim is to continue increasing the proportion of recycled material used as standard.



### RECYCLED PVC

All PVC-U profiles in the RECYCLED PVC material class are guaranteed to contain recycled material in the inner core and, depending on the geometry, are supplied with a recycled material content of between 39% and 57%.



### BIO-ATTRIBUTED PVC

Schüco uses bio-attributed PVC in the production of BIO-ATTRIBUTED profiles. During its manufacture, crude oil is replaced by tall oil, which is a non-fossil raw material made from pine trees and a by-product of paper production. The PVC contained in BIO-ATTRIBUTED profiles saves up to 90% CO<sub>2</sub>e compared to the production of conventional primary PVC from the same manufacturer.



All the latest information:  
[www.schueco.de/material-en](http://www.schueco.de/material-en)



## Polyamide bars made from recycled material

# Recycling as standard: the same insulating bars, less CO<sub>2</sub>



- Reduction of the CO<sub>2</sub> equivalent by more than two thirds
- New GWP values are available in the current version of SchüCal
- Product properties and certifications, and the order process and article numbers remain the same



All the latest information:  
[www.schueco.de/material-rezyklat-en](http://www.schueco.de/material-rezyklat-en)

## RE:CORE

# Recycling solutions for sustainable companies



- RE:CORE specialises in the management of complex material flows and has the appropriate logistics for material cycles
- RE:CORE is a full service provider, with unit disposal and recycling
- The reprocessed aluminium or PVC is of a consistent quality and features a high level of purity



All the latest information:  
[www.recore-recycling.com/global](http://www.recore-recycling.com/global)

## Aluminium recycling

# Comprehensive collection service for old units



- Aluminium is ideal for recycling and can be kept in a virtually unending loop without any loss of quality when recycled properly
- With the new recycling scheme, Schüco is offering a collection service for old units from adaptive reuse and dismantling projects
- Together with reliable partners, Schüco is creating a recycling concept

## Building-integrated photovoltaics (BIPV)

# Energy self-sufficient buildings reduce carbon emissions



- Photovoltaics is an efficient solution for future-proof properties
- Looking at the energy certificate within the context of the German Energy Saving Ordinance (EnEV), the energy generated in the modules can be subtracted from the calculated power requirements, which results in primary energy requirements that are as low as possible
- The use of BIPV modules is key for creating ultra low energy, zero energy and energy plus buildings



All the latest information:  
[www.schueco.de/bipv-en](http://www.schueco.de/bipv-en)

## Internet of Façades (IoF)

# Digital twin



- Digital twins of Schüco units where all the data and documents are stored, such as component specifications and details of the materials
- From 2025, Schüco products will be fitted with an IoF ID as standard to make the move towards a digital, transparent building envelope even more efficient
- IoF enables the carbon footprint of the materials used and EPDs for each unit to be stored and accessed at any time



All the latest information:  
[www.schueco.de/iof-id-fokus-en](http://www.schueco.de/iof-id-fokus-en)

## EPDs for certification: SchüCal

# Numerous updates for creating EPDs at the touch of a button



- System EPDs for all aluminium grades can now be generated directly from SchüCal
- Low Carbon glass is defined by an agreed industry standard. In addition, there is the option to enter an individual value
- SchüCal EPDs are now created in line with the new standard EN 15804+A2



All the latest information:  
[www.schueco.de/softwareloesungen-en](http://www.schueco.de/softwareloesungen-en)

## Environmental Calculator

# Improving carbon footprints with the Environmental Calculator



- Provides Schüco partners with full transparency over the CO<sub>2</sub>e values of the materials used in their window and door units throughout the planning process
- Indicates the carbon footprint of specific units
- User-friendly upload of the unit material list

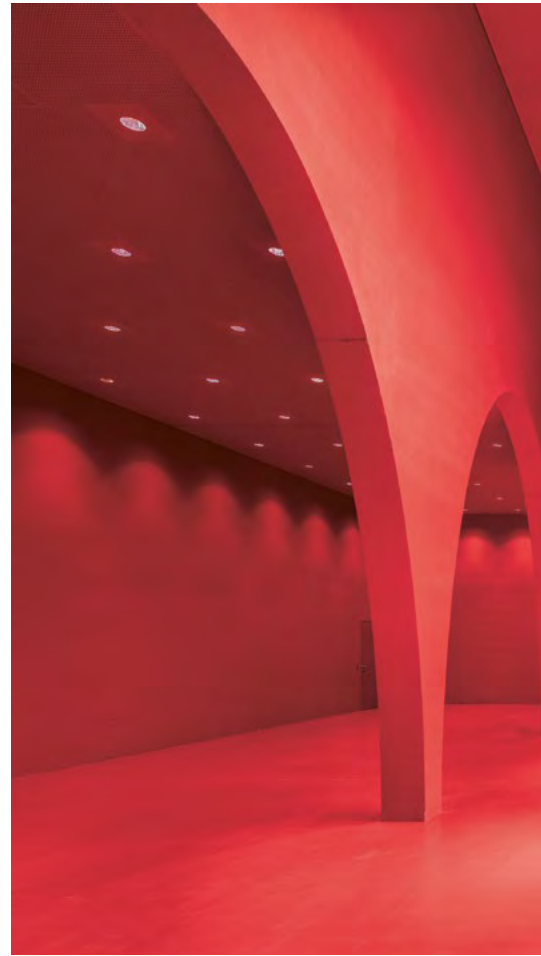
<b>Topic</b>	<b>38</b>
<b>Products</b>	
<b>Schüco aluminium systems</b>	<b>40</b>
<b>Schüco Jansen Steel Systems</b>	<b>44</b>



# Fire protection



# Fire protection certification for standard-compliant fabrication



**Be prepared to meet any requirement with our tested fire and smoke protection solutions. This also applies to cost-effective fabrication, be it in the workshop or on the building site.**



Schüco fire protection systems can be used to efficiently implement fire protection concepts in buildings. Be it in hospitals, nurseries, shopping centres or office buildings – with our systems you're always on the safe side.

**F**ire and smoke protection are essential in the construction industry to ensure the safety of the users and the long-term functionality and value retention of a building. One of the main tasks is to select the right solutions. They need to be suitable for both the general project requirements and the fire protection concept. With our certified products and solutions, we offer fire and smoke protection systems that are not only safe, but that are also practical and efficient to fabricate. This enables you to ensure that the fabrication and installation processes are carried out quickly, reliably and smoothly.

### **Cross-product system solutions**

We think about and develop fire and smoke protection solutions in a cross-product way: the tested system solutions for doors, windows, façades and partition walls including fittings and glazing are available made from steel or aluminium, for use indoors or outdoors, in all standard fire and smoke protection classes. We develop and test special solutions on a project-specific basis, depending on the product requirements and the installation scenario. In addition to comprehensive safety and security, Schüco fire and smoke protection solutions also feature sound reduction, ease of access and smart control for added comfort and convenience. Thanks to Schüco system compatibility, the transition between fire protection areas and standard areas is visually imperceptible. Dismantling has also been taken into account for Schüco fire and smoke protection solutions, as many of the products are already Cradle to Cradle certified.

### **Consultations and training**

You also benefit from our comprehensive technical support. This not only includes detailed product documentation and installation instructions, but also personal consultations and a broad range of suitable product training courses. The training courses provide both technical information and practical tips for the quick and efficient installation of the fire and smoke protection systems, which helps increase productivity and improve the quality of the work.



#### **Find out more**

All the latest information about fire protection from Schüco:

[www.schueco.de/brandschutz-fokus-en](http://www.schueco.de/brandschutz-fokus-en)

## Schüco FireStop ADS 90 FR 30 door system

# One platform: 30 minutes of fire resistance on the inside and outside

- Open rebate profile geometry: high level of flexibility with efficient profile processing and installation
- Wide range of designs
- Barrier-free fire doors thanks to variable threshold and fittings solutions



### Technical data

Glass or infill thicknesses

Glass: 15 mm to 53 mm  
Panel: 25 mm to 45 mm

Thermal insulation of glass with Psi value of 0.076 W/mK and  $U_g$  value of 0.5 W/(m<sup>2</sup>K)

Thermal insulation of unit (unit size W x H: 1300 mm x 2500 mm)

$U_d$  value of 1.2 W/(m<sup>2</sup>K)

Thermal insulation of panel with Psi value of 0.062 W/mK and  $U_p$  value of 0.66 W/(m<sup>2</sup>K)

Thermal insulation of unit (unit size W x H: 1300 mm x 2500 mm)

$U_d$  value of 1.3 W/(m<sup>2</sup>K)

Sound reduction of glass  
SchücoFlam 30 ISO 114  
 $R_w$  value of glass of 53 dB  
SchücoFlam 30 ISO 114  
 $R_w$  value of glass of 53 dB  
SchücoFlam 30 C (V8)  
 $R_w$  value of glass of 43 dB

Sound reduction of unit

$R_w$  value of 44 dB (single-leaf door W x H: 1230 mm x 2110 mm)

$R_w$  value of 44 dB (double-leaf door W x H: 2676 mm x 2500 mm)

$R_w$  value of 45 dB (fixed glazing W x H: 1230 mm x 1480 mm)

Burglar resistance

Up to class RC 2 – with and without panic function

Maximum pane and panel sizes

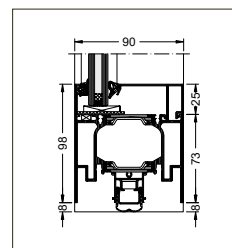
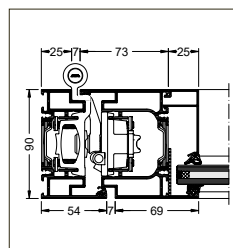
Fire-resistant glass, portrait format, W x H: 1500 mm x 3000 mm  
Fire-resistant glass, landscape format, W x H: 3000 mm x 1500 mm  
Fire-resistant panel, portrait format, W x H: 1250 mm x 2500 mm  
Fire-resistant panel, landscape format, W x H: 2500 mm x 1250 mm

Options

Single and double-leaf doors, inward and outward-opening, with or without sidelight and with or without toplight, fixed glazing, 90° to 180° corner constructions for fixed glazing, attachment to Schüco FW 50+ BF and FW 60+ BF fire-resistant façades, T-cleat construction method, frame construction method, combined construction method and reverse rebate profile construction method, tested fire and smoke protection



All the latest information:  
[www.schueco.de/firestop-ads-90-fr-30-en](http://www.schueco.de/firestop-ads-90-fr-30-en)



## Schüco FireStop ADS 90 FR 90 door system

# Concealed 90-minute fire protection – now for outside too

- Excellent performance characteristics
- Significant weight reduction: a true lightweight among heavyweights
- Concealed fittings: out of sight and uniform



### Technical data

Glass or infill thicknesses

Glass: 51 mm to 58 mm  
Panel: 54 mm to 58 mm

Thermal insulation of glass  
with Psi value of 0.076 W/mK and  
 $U_g$  value of 0.5 W/(m<sup>2</sup>K)

Thermal insulation of unit (unit size W x H: 1300 mm x 2500 mm)

$U_d$  value of 1.2 W/(m<sup>2</sup>K)

Thermal insulation of panel  
with Psi value of 0.026 W/mK and  
 $U_p$  value of 2.82 W/(m<sup>2</sup>K)

Thermal insulation of unit (unit size W x H: 1300 mm x 2500 mm)

$U_d$  value of 2.2 W/(m<sup>2</sup>K)

Sound reduction of glass  
SchücoFlam 90 C  
 $R_w$  value of glass of 46 dB

Sound reduction of unit

$R_w$  value of 42 dB (single-leaf door W x H: 1250 mm x 2120 mm)

Burglar resistance

Up to class RC 2

Maximum pane and panel sizes

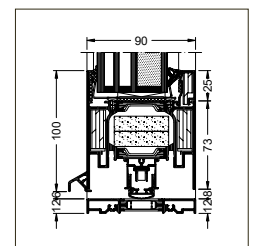
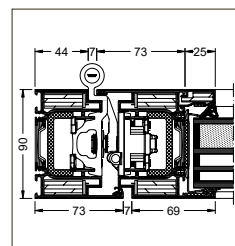
Fire-resistant glass, portrait format, W x H: 1500 mm x 3000 mm  
Fire-resistant glass, landscape format, W x H: 3190 mm x 1266 mm  
Fire-resistant panels, portrait format, W x H: 1250 mm x 3000 mm  
Fire-resistant panel, landscape format, W x H: 2500 mm x 1250 mm  
Fire-resistant Aestuver panel, portrait format, W x H: 1090 mm x 3000 mm  
Fire-resistant Aestuver panel, landscape format, W x H: 2500 mm x 1090 mm

Options

Single and double-leaf doors, inward and outward-opening, with or without sidelight and with or without toplight, fixed glazing, F90 fixed glazing including door installation, T-cleat construction method, frame construction method, combined construction method, mechanical strength in accordance with DIN EN 1192 to class 4 (highest category: the doors are frequently subject to excessive use of force)



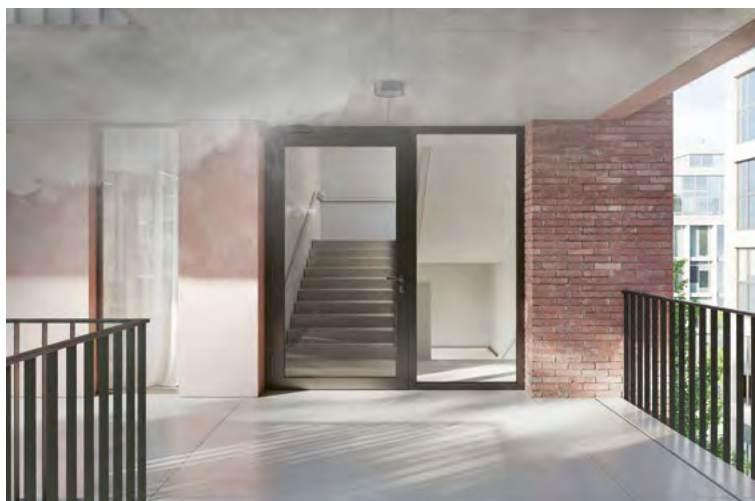
All the latest information:  
[www.schueco.de/firestop-ads-90-fr-90-en](http://www.schueco.de/firestop-ads-90-fr-90-en)



## Schüco AD UP 75 door system

# Thermally insulated smoke doors

- One door system – many uses: different applications in the building with requirements tested to  $S_{200}$  and  $S_a$
- Flexible scaling: tailored door solutions with flexible thermal insulation and functions thanks to its 3 or 5-chamber leaves
- Low-maintenance: stable double-shell leaf profile construction with no bimetallic effect and proven durability



### Technical data

#### Glass thicknesses

20 mm to 51 mm

Thermal insulation of glass  
with Psi value of 0.031 W/mK and  
 $U_g$  value of 0.5 W/(m<sup>2</sup>K)  
 $U_g$  value of 0.7 W/(m<sup>2</sup>K)  
with Psi value of 0.036 W/mK and  
 $U_g$  value of 1.0 W/(m<sup>2</sup>K)

Thermal insulation of unit (unit size W x H: 1230 mm x 2180 mm)

$U_d$  value of 1.10 W/(m<sup>2</sup>K)  
 $U_d$  value of 1.20 W/(m<sup>2</sup>K)

$U_d$  value of 1.40 W/(m<sup>2</sup>K)

Sound reduction of glass  
 $R_w$  value of glass of 36 dB  
 $R_w$  value of glass of 43 dB  
 $R_w$  value of glass of 46 dB

Sound reduction of unit  
 $R_w$  value of 38 dB  
 $R_w$  value of 41 dB  
 $R_w$  value of 42 dB

#### Burglar resistance

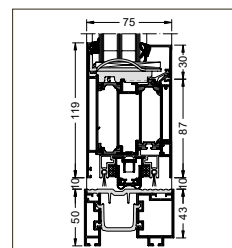
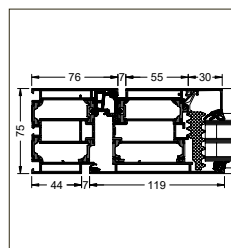
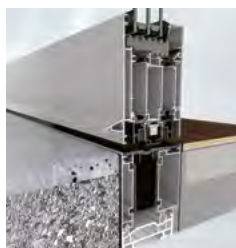
Up to class RC 3

#### Options

Single-leaf doors, inward and outward-opening,  
with or without sidelight and with or without toplight,  
barrier-free threshold



All the latest information:  
[www.schueco.de/ad-up-75-en](http://www.schueco.de/ad-up-75-en)



## Schüco Deflame

# Fire-rated spandrel area

- Schüco Deflame is a system-tested solution.
- Special solutions that are not tested are no longer required
- Easy fabrication as many of the system articles are pre-assembled



### Technical data

#### Features and benefits

Schüco Deflame fire-rated, fully integrated spandrel panel for mullion/transom and unitised façades

Protects the building against the vertical spread of fire to higher storeys

Tested protection against the vertical spread of fire in accordance with the EU standard and classification levels EI30, EI60, EI90 and EI120

Schüco Deflame is a system-tested solution

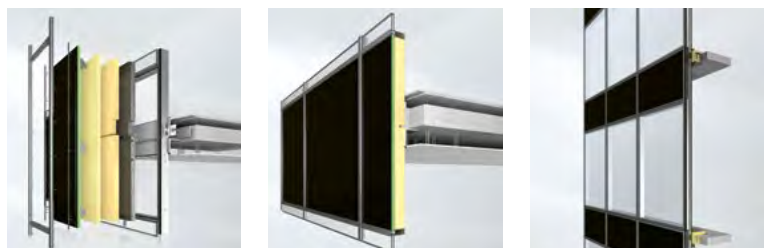
Maximum panel dimensions W x H: 1800 mm x 1400 mm

Individual external appearance for flexible façade design

Seamless transitions between the fire-resistant and standard areas



All the latest information:  
[www.schueco.de/deflame-en](http://www.schueco.de/deflame-en)



## Janisol 2 EI30 door system

# Efficient RC 2 burglar resistance with steel fire doors

- Burglar resistance can be achieved with just a few additional components
- Latch-and-bolt lock for leaf heights of up to 2300 mm, with top locking point for a leaf height of up to 3000 mm
- Adjustable strike plates for easy configuration



### Technical data

Protection classes

EI<sub>2</sub>30-S<sub>a</sub>C5 and EI<sub>2</sub>30-S<sub>200</sub>C5 in accordance with DIN EN 16034

Areas of application

External use

Glass or infill thicknesses

Outer frame: 15 mm to 37 mm  
Leaf frame: 15 mm to 37 mm

Clear opening dimension

Maximum size W x H:  
1500 mm x 3000 mm (single-leaf), 3000 mm x 3000 mm (double-leaf)

Maximum pane and panel sizes

Fire-resistant glass W x H: 1555 mm x 3088 mm  
Fire-resistant panel W x H: 1531 mm x 2743 mm

Thermal insulation of glass  
with Psi value of 0.11 W/mK and  
U<sub>g</sub> value of 0.5 W/(m<sup>2</sup>K)  
U<sub>g</sub> value of 0.7 W/(m<sup>2</sup>K)  
U<sub>g</sub> value of 1.0 W/(m<sup>2</sup>K)

Thermal insulation of unit (unit size W x H: 1230 mm x 2180 mm)

U<sub>a</sub> value of 1.35 W/(m<sup>2</sup>K)  
U<sub>a</sub> value of 1.49 W/(m<sup>2</sup>K)  
U<sub>a</sub> value of 1.72 W/(m<sup>2</sup>K)

Sound reduction of glass  
R<sub>w</sub> value of glass of 46 dB

Sound reduction of unit  
R<sub>w</sub> value of 43 dB

Burglar resistance

Up to class RC 2 – with and without panic function

Material

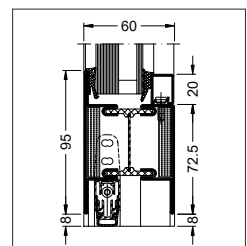
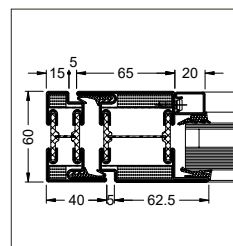
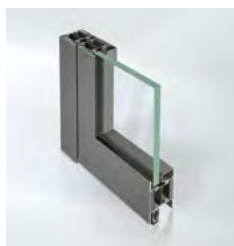
Steel and stainless steel

Options

Single and double-leaf doors, inward and outward-opening, with or without sidelight and with or without toplight, fixed glazing for external use, corner constructions for fixed glazing, F30 fixed glazing including door installation for external use, tested fire and smoke protection



All the latest information:  
[www.schueco.de/janisol-2-ei30-en](http://www.schueco.de/janisol-2-ei30-en)





Kö-Bogen, Düsseldorf, Germany, © HGEsch

<b>Topic</b>	<b>48</b>
<b>Products</b>	
<b>Sälzer aluminium systems</b>	<b>50</b>



# High security



# High security solutions. Constructed to protect.

**With individual high-security solutions for buildings, Sälzer ensures that people can spend time in buildings during exceptionally threatening situations without worrying. Sälzer is therefore the ideal partner for construction projects with security needs that go beyond standard requirements.**





This includes everything from burglar resistance and access control to protection against bullets, explosions, fire and smoke. With this in mind, Sälzer develops effective, attractive concepts for building protection.

**S**ince 2018, Sälzer, the specialist in high security, has brought its expertise in the field of high-security buildings to the Schüco Group. The company offers individual consultancy, tailored project-specific concepts and comprehensive high-security solutions worldwide from a single source. Experienced experts support all stages of the building project, from the planning stage right through to implementation and maintenance. Decision-makers and planners of high-security buildings are relieved of complex questions and can rest assured that with security solutions and the tested, certified technologies from Sälzer, they can do everything possible to protect human life and preserve assets.

**Field-tested products – seamlessly integrated**  
Sälzer high-security systems are tested against real threats in our in-house test centre. The product solutions therefore meet all the applicable regulations, standards and norms. Depending on the challenge, the products even exceed the required standards. As a highly specialised provider, Sälzer combines features of protection against break-ins, bullets, fire and explosions from various security classes in a single unit. Experience of over 50 years and a team of experts enable the complex high-security requirements of a building to be analysed, consulted on and implemented all from a single source.

 **SÄLZER**



**Find out more**

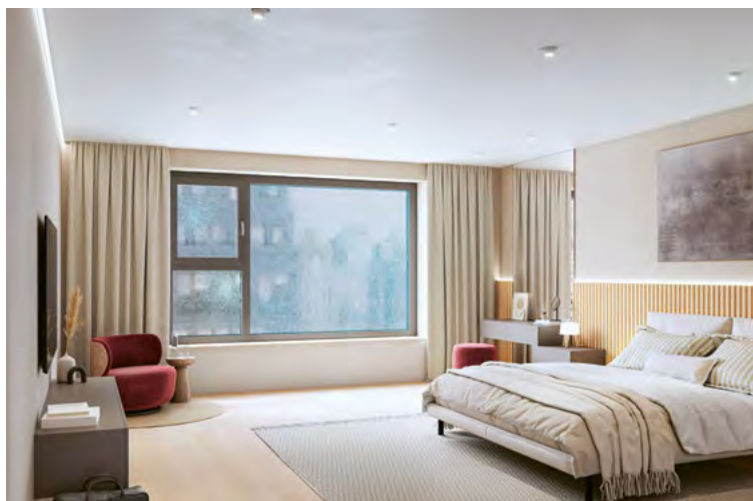
All the latest information about high security with Sälzer:

[www.schueco.de/sicherheitssysteme-en](http://www.schueco.de/sicherheitssysteme-en)

## S6es-w series aluminium window system

# Aluminium high-security window from Sälzer

- A range of tested design options, such as top-hung vents, fixed lights, turn/tilt vents and window doors, for customised solutions
- Variable, combined protection against break-ins, bullets and explosions up to the top resistance classes
- The alternative Sälzer S2es-w high-security window further supplements the range, meeting the highest security classes of international standards



### Technical data

#### Vent sizes

Thermal insulation of glass  
with Psi value of 0.08 W/mK and  
 $U_g$  value of 0.5 W/(m<sup>2</sup>K)  
 $U_g$  value of 0.7 W/(m<sup>2</sup>K)  
 $U_g$  value of 1.0 W/(m<sup>2</sup>K)

Sound reduction of glass  
 $R_w$  value of glass of 46 dB

#### Burglar resistance

#### Bullet resistance

#### Blast resistance

#### Options

Maximum weight: 350 kg, dimensions: project-specific

Thermal insulation of unit (unit size W x H: 1230 mm x 1480 mm)

$U_w$  value of 0.96 W/(m<sup>2</sup>K)  
 $U_w$  value of 1.09 W/(m<sup>2</sup>K)  
 $U_w$  value of 1.29 W/(m<sup>2</sup>K)

Sound reduction of unit  
 $R_w$  value of 45 dB

Up to class RC 4

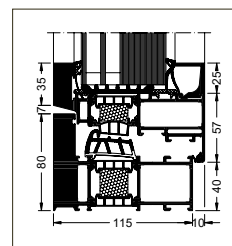
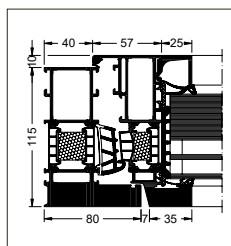
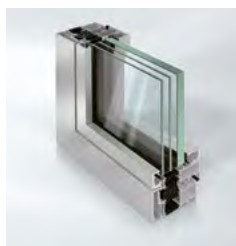
Up to class FB4-NS

Tested up to class EXR3 and up to 500 kg of TNT in an open arena

Also as a transaction window with an integrated  
transfer tray and communication equipment  
Can also be used as a window door



All the latest information:  
[www.schueco.de/saelzer-serie-s6es-alu-fenster-en](http://www.schueco.de/saelzer-serie-s6es-alu-fenster-en)



## S6es-d series aluminium door system

# Aluminium high-security door from Sälzer

- Consistent profile face widths ensure a neutral and homogenous appearance
- Tested and certified by accredited test institutes as a complete door unit, including the glazing and wall attachment, in accordance with the relevant standards for burglar resistance (up to RC 4), bullet resistance (up to FB4-NS) and blast resistance (500 kg of explosives in an arena air-blast test)
- The alternative Sälzer S2es-d high-security door further supplements the range, meeting the highest security classes of international standards



### Technical data

#### Leaf sizes

Thermal insulation of glass  
with  $\Psi$  value of 0.08 W/mK and  
 $U_g$  value of 0.5 W/(m<sup>2</sup>K)  
 $U_g$  value of 0.7 W/(m<sup>2</sup>K)  
 $U_g$  value of 1.0 W/(m<sup>2</sup>K)

Sound reduction of glass  
 $R_w$  value of glass of 48 dB

#### Burglar resistance

#### Bullet resistance

#### Blast resistance

#### Fire and smoke protection

#### Options

Maximum weight: 600 kg, dimensions: project-specific

Thermal insulation of unit (unit size W x H: 1245 mm x 2245 mm)

$U_d$  value of 1.33 W/(m<sup>2</sup>K)  
 $U_d$  value of 1.49 W/(m<sup>2</sup>K)  
 $U_d$  value of 1.63 W/(m<sup>2</sup>K)

Sound reduction of unit  
 $R_w$  value of 47 dB

Up to class RC 4

Up to class FB4-NS

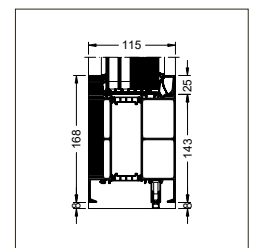
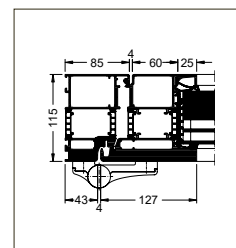
Tested up to class EXR2 and up to 500 kg of TNT in an open arena

–

Also available as a single-leaf panic door or a double-leaf full panic door



All the latest information:  
[www.schueco.de/saelzer-serie-s6es-alu-tueren-en](http://www.schueco.de/saelzer-serie-s6es-alu-tueren-en)



## S1es 50 Semi-SG series aluminium façade system

# High-security façade with semi-structural glazing from Sälzer

- The Sälzer S1es 50 aluminium high-security façade for multi-storey structures offers combined protection against break-ins, bullets and explosions, all with a face width of just 50 mm
- When designed as a semi-SG façade, burglar resistance up to RC 4; as a mullion/transom façade, additional bullet resistance up to FB4-NS and blast resistance to 500 kg of explosives
- High level of design freedom, seamless integration in the Schüco FWS 50 system



### Technical data

Glass or infill thicknesses

32 mm to 75 mm

Thermal insulation of glass with Psi value of 0.08 W/mK and  
 $U_g$  value of 0.5 W/(m<sup>2</sup>K)  
 $U_g$  value of 0.7 W/(m<sup>2</sup>K)  
 $U_g$  value of 1.0 W/(m<sup>2</sup>K)

Thermal insulation of unit (unit size W x H: 1230 mm x 1480 mm)

$U_{cw}$  value of 0.82 W/(m<sup>2</sup>K)  
 $U_{cw}$  value of 1.00 W/(m<sup>2</sup>K)  
 $U_{cw}$  value of 1.30 W/(m<sup>2</sup>K)

Sound reduction of glass  
 $R_w$  value of glass of 48 dB

Sound reduction of unit  
 $R_w$  value of 48 dB

Burglar resistance

Up to class RC 4

Bullet resistance

–

Blast resistance

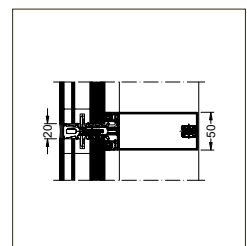
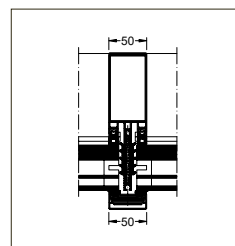
On request

Options

Semi-structural glazing appearance with horizontal or vertical emphasis



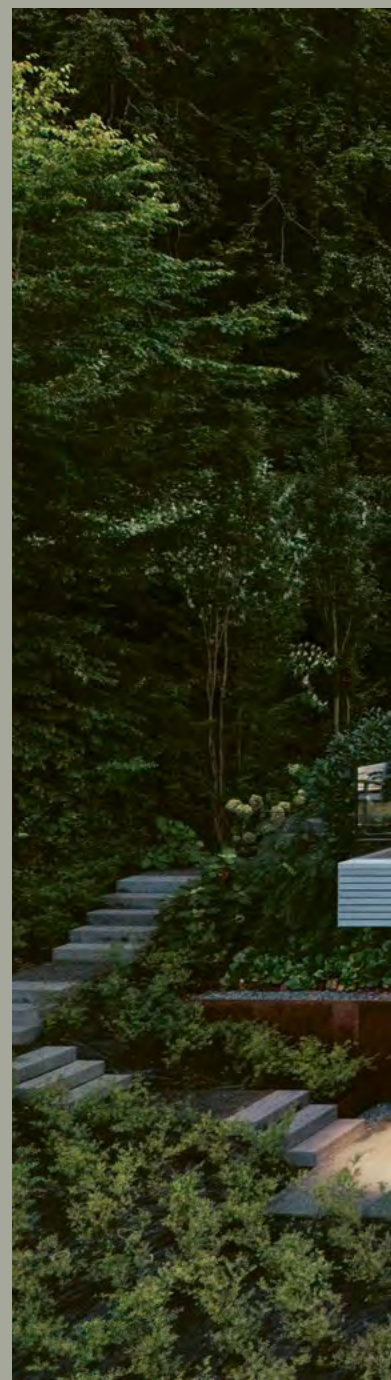
All the latest information:  
[www.schueco.de/saelzer-serie-s1es-alu-fassade-en](http://www.schueco.de/saelzer-serie-s1es-alu-fassade-en)





British Embassy, Warsaw, Poland, © Peter Cook

<b>Topic</b>	<b>56</b>
<b>Products</b>	
<b>Schüco aluminium systems</b>	<b>58</b>
<b>Schüco PVC-U systems</b>	<b>63</b>
<b>Schüco Jansen Steel Systems</b>	<b>67</b>



# Residential



# Perfect solutions for an individual home



**F**rom family homes to villas and apartment complexes, Schüco is the first choice for high-quality windows, entrance doors and sliding doors. As all products can be perfectly coordinated with one another, you can utilise the full range of our portfolio to adapt any living space to your customers' individual requirements. This offers you the unique opportunity to inspire your customers with customised, innovative solutions that are precisely tailored to their personal needs and wishes – for an incomparable living experience.

#### **Comprehensive configuration**

The requirements of a construction project can be quite diverse. For example, the focus could be excellent thermal and sound insulation, which contributes to a pleasant and quiet living atmosphere. Accessibility in the sense of barrier-free transitions, ease of use, and the integration of innovative smart home technology, is also an important topic, particularly in the context of renovations. We offer solutions that guarantee maximum comfort and convenience for your customers, irrespective of their age, size or ability. In this way, every home you build becomes a future-oriented investment.

#### **The desire for transparency**

Windows, doors and sliding doors are not only functional building components, they are also stylish design elements that shape the look of

a room or building. Spacious rooms flooded with natural light are in demand. The innovative Schüco Design sliding and folding/sliding systems are particularly suitable for large openings. They create an almost seamless transition between the inside and outside. The technical sophistication of the systems means high stability and energy efficiency are guaranteed, even with large window and door areas. They also impress with tested and certified burglar resistance.

#### **Cross-material design**

The design is made even more flexible thanks to a wide range of opening types and surface finishes, as well as the option to combine aluminium and PVC-U products in a single building. This does not impact the appearance of the building: the uniform profile colours of the different components make them look as if they have come from the same mould and give the exterior of the building a homogeneous appearance.



#### **Find out more**

All the latest information about residential construction with Schüco:  
[www.schueco.de/schiebesysteme-qr-en](http://www.schueco.de/schiebesysteme-qr-en)

**You create the living spaces  
to suit your customers' wishes,  
we provide the perfect prod-  
ucts and services for the  
building envelope – individual,  
modern, cross-product and  
for all materials.**

Schüco enables the future-proof and sustainable construction of living spaces that meet the individual needs of the occupants and fulfil the highest standards in terms of function and design.

## Schüco AWS 90 AC.SI window system

# Natural ventilation without disruptive external noise

The OpenSilent window system is based on the Schüco AWS modular system. The following additional components are included:

- Add-on profile on outer frame
- Rebate profile for bubble gasket
- Continuous bubble gasket
- Limiting stay for tilt position
- Pre-fabricated ventilation cassettes



### Technical data

Glass or infill thicknesses

Outer frame: 28 mm to 63 mm  
Vent frame: 28 mm to 68 mm

Thermal insulation of glass  
with Psi value of 0.031 W/mK and  
 $U_g$  value of 0.5 W/(m<sup>2</sup>K)  
 $U_g$  value of 0.7 W/(m<sup>2</sup>K)  
with Psi value of 0.036 W/mK and  
 $U_g$  value of 1.0 W/(m<sup>2</sup>K)

Thermal insulation of unit (unit size W x H: 1230 mm x 1480 mm)

$U_w$  value of 0.82 W/(m<sup>2</sup>K)  
 $U_w$  value of 0.95 W/(m<sup>2</sup>K)  
 $U_w$  value of 1.16 W/(m<sup>2</sup>K)

Sound reduction of glass  
 $R_w$  value of glass of 37 dB  
 $R_w$  value of glass of 41 dB  
 $R_w$  value of glass of 51 dB

Sound reduction of unit (closed or open in the tilt position)  
 $R_w$  value of 40 dB and  $R_w$  value of 32 dB  
 $R_w$  value of 43 dB and  $R_w$  value of 32 dB  
 $R_w$  value of 47 dB and  $R_w$  value of 31 dB

Burglar resistance

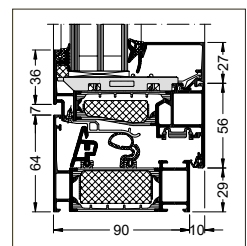
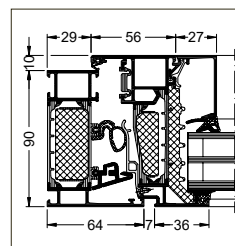
Up to class RC 2

Options

Natural ventilation with simultaneous sound reduction  
Impact ventilation possible in the turn position



All the latest information:  
[www.schueco.de/aws-90-ac-si-qr-en](http://www.schueco.de/aws-90-ac-si-qr-en)



## Schüco AD UP door system Design Edition Gen2

# Design flush pull grip with integrated Schüco Fingerprint system

- The feature flush pull grip is a component of the comprehensive Schüco AD UP modular system – almost identical work and fabrication processes as for the previous model of the feature flush pull grip mean that no additional tools or investment are required
- Easy installation of the construction parts and the electrical components
- Straight-forward commissioning of the smart components, which can be carried out by the user directly



### Technical data

Glass or infill thicknesses

Glass and insert panel infills: 28 mm to 68 mm  
 Bonded mounted infills:  
 39 mm to 79 mm (bonded on one side), 90 mm (bonded on both sides)  
 Mechanically fixed mounted infills: 56 mm to 82 mm

Thermal insulation of glass  
 with Psi value of 0.031 W/mK and  
 $U_g$  value of 0.365 W/(m<sup>2</sup>K)  
 $U_g$  value of 0.7 W/(m<sup>2</sup>K)  
 with Psi value of 0.036 W/mK and  
 $U_g$  value of 1.0 W/(m<sup>2</sup>K)

Thermal insulation of unit (unit size W x H 1000 mm x 2140 mm)

$U_d$  value of 0.68 W/(m<sup>2</sup>K)  
 $U_d$  value of 1.10 W/(m<sup>2</sup>K)

$U_d$  value of 1.30 W/(m<sup>2</sup>K)

Sound reduction of glass  
 $R_w$  value of glass of 46 dB

Sound reduction of unit  
 $R_w$  value of 42 dB

Burglar resistance

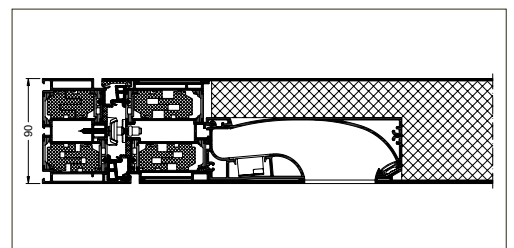
Up to class RC 2

Options

Thermal insulation to passive house level  
 LED feature handle with integrated Fingerprint system



All the latest information:  
[www.schueco.de/ad-up-design-edition-gen2-en](http://www.schueco.de/ad-up-design-edition-gen2-en)



## Schüco AS PD 75.HI sliding system

# Individuality without complexity

- The butt joint connection allows the outer frame to be installed directly on the building site
- Straight-forward maintenance – once installed, the pull grip and interlock can be removed; the rollers are installed without tools by using clips instead of toothed lock washers
- Schüco TipTronic – fully integrated in the profile and components are pre-installed in the workshop



### Technical data

Vent sizes

Maximum width: 3500 mm or maximum height: 3500 mm

Vent weights

Up to 800 kg

Face width of interlock section

35 mm

Thermal insulation of glass  
with Psi value of 0.031 W/mK and  
 $U_g$  value of 0.5 W/(m<sup>2</sup>K)  
 $U_g$  value of 0.7 W/(m<sup>2</sup>K)  
with Psi value of 0.036 W/mK and  
 $U_g$  value of 1.0 W/(m<sup>2</sup>K)

Thermal insulation of unit (unit size W x H: 5000 mm x 3000 mm)

$U_w$  value of 0.82 W/(m<sup>2</sup>K)  
 $U_w$  value of 1.00 W/(m<sup>2</sup>K)

$U_w$  value of 1.27 W/(m<sup>2</sup>K)

Sound reduction of glass  
 $R_w$  value of glass of 36 dB  
 $R_w$  value of glass of 43 dB  
 $R_w$  value of glass of 50 dB

Sound reduction of unit  
 $R_w$  value of 36 dB  
 $R_w$  value of 40 dB  
 $R_w$  value of 44 dB

Burglar resistance

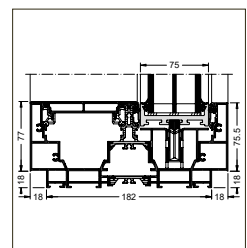
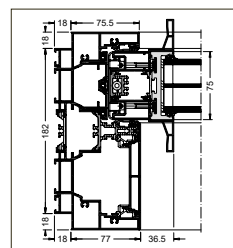
Up to class RC 3

Options

Manual or mechatronic operation  
Level threshold  
Concealed frame  
Can be combined with sun shading  
Numerous design features



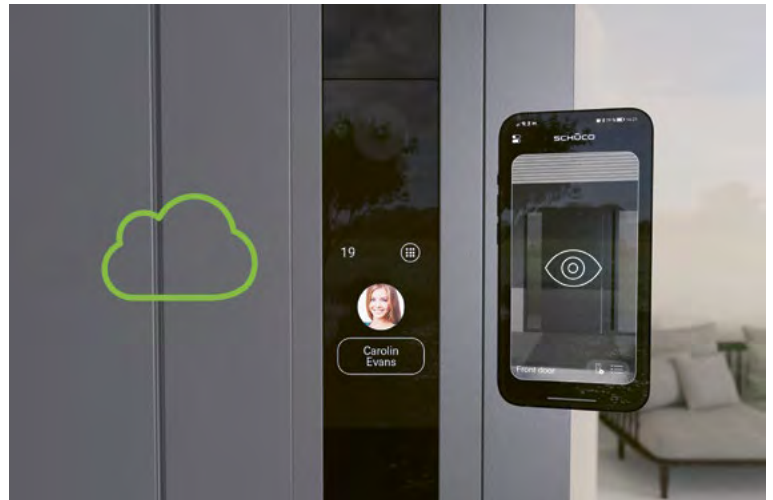
All the latest information:  
[www.schueco.de/as-pd-75-hi-performance-line-qr-en](http://www.schueco.de/as-pd-75-hi-performance-line-qr-en)



## Schüco DCS SmartTouch

# Intelligent door management system

- Quick to commission in just a few steps without prior training or knowledge of the system
- Separate casing for simple installation in the leaf or outer frame profile and for perfect weathertightness
- Efficient fabrication: rectangular profile milling allows standardised milling machines to be used



### Technical data

#### Features and benefits

As an intelligent door management system, Schüco DCS SmartTouch combines cutting-edge audio and video communication with integrated access control.

Touchscreen with integrated HD camera, microphone, doorbell, night vision and brightness sensor

Simple and convenient configuration, commissioning, operation and control via the Schüco app

Can also be combined with other Schüco DCS modules

#### Area of use

For external use in large commercial or residential projects

#### Dimensions

W x H x D: 70 mm x 212 mm x 44 mm

#### Communication method

Cloud, WLAN, LAN, Session Initiation Protocol (SIP)

#### Protection rating

IP54

#### Installation type

Profile-integrated, surface-mounted or flush-mounted



All the latest information:  
[www.schueco.de/dcs-smarttouch-en](http://www.schueco.de/dcs-smarttouch-en)



## Schüco DCS EntryGo access control

# Convenient and secure access control for every door

- Direct integration in the outer frame profile saves space and streamlines production
- Bus communication between the modules minimises cabling required
- The control unit is installed outside of the door



### Technical data

#### Features and benefits

Schüco DCS EntryGo enables secure, flexible access control: via a code, RFID or smartphone as an access medium as well as via a flexibly configurable multi-ISO RFID/BLE reader unit for standard RFID technologies

Web-based central platform for managing and assigning authorisations

Profile-integrated, flush-fitted installation of the modules in Schüco doors or can be wall-mounted next to any door when retrofitting

Control unit for access control is positioned outside of door

#### Area of use

For external use in large commercial or residential projects

#### Dimensions

W x H x D: 70 mm x 70 mm x 40 mm

#### Communication method

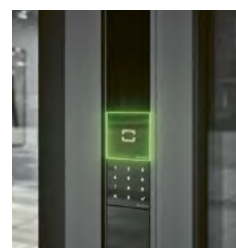
WLAN, LAN, Bluetooth

#### Protection rating

IP54

#### Installation type

Profile-integrated, surface-mounted or flush-mounted



## Schüco FocusIng window system

# Sustainable PVC-U window system

- Sustainable profile system due to the inner core made from recycled material, the reduced number of different parts and its economical design
- Compatible with the Schüco LivIng and Schüco CT 70 systems, ensuring lower storage and transport costs thanks to the use of identical parts
- Available in four profile colours (base material): white, cream, caramel and dark grey



### Technical data

Glass or infill thicknesses

Thermal insulation of glass  
with Psi value of 0.030 W/mK and  
U<sub>g</sub> value of 0.5 W/(m<sup>2</sup>K)  
U<sub>g</sub> value of 0.7 W/(m<sup>2</sup>K)

Sound reduction of glass  
R<sub>w</sub> value of glass of 37 dB  
R<sub>w</sub> value of glass of 42 dB  
R<sub>w</sub> value of glass of 45 dB  
R<sub>w</sub> value of glass of 50 dB

Burglar resistance

Options

Outer frame: 10 mm to 48 mm  
Vent frame: 16 mm to 54 mm

Thermal insulation of unit (unit size W x H: 1230 mm x 1480 mm)

U<sub>w</sub> value of 0.77 W/(m<sup>2</sup>K)  
U<sub>w</sub> value of 0.90 W/(m<sup>2</sup>K)

Sound reduction of unit  
R<sub>w</sub> value of 41 dB  
R<sub>w</sub> value of 44 dB  
R<sub>w</sub> value of 45 dB  
R<sub>w</sub> value of 48 dB

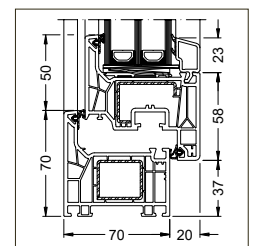
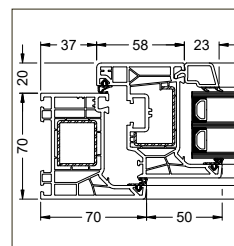
Up to class RC 2

Barrier-free level or standard threshold (20 mm)

Surface finish options  
Integrated ventilation solutions  
Smart home compatible  
Can also be used as a window door



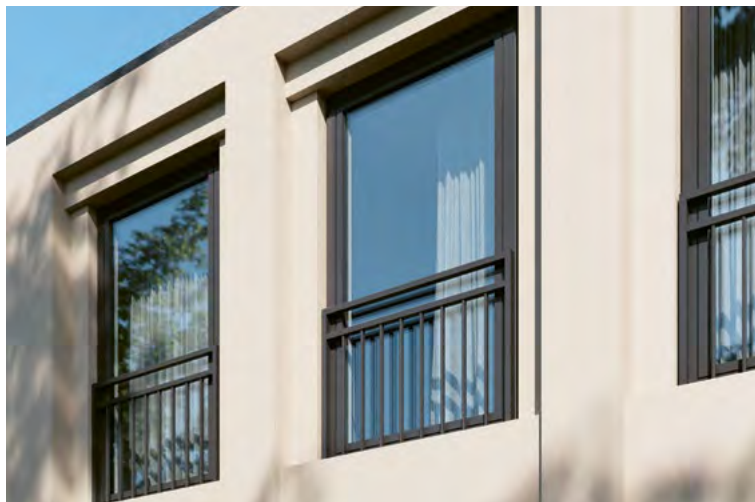
All the latest information:  
[www.schueco.de/focusing-qr-en](http://www.schueco.de/focusing-qr-en)



## Schüco Symbiotic window system

# Hybrid design system for PVC-U windows

- Same design details as Schüco Living for maximum fabrication efficiency
- Two fabrication options:  
Mechanical connection of the PVC-U frame to the aluminium frame or weldable option available for maximum fabrication efficiency
- Optional use of insulating attachment profiles in the outer frame for the best thermal insulation properties



### Technical data

Glass or infill thicknesses

Outer frame: 40 mm to 54 mm  
Vent frame: 40 mm to 54 mm

Thermal insulation of glass  
with Psi value of 0.030 W/mK and  
U<sub>g</sub> value of 0.5 W/(m<sup>2</sup>K)  
U<sub>g</sub> value of 0.7 W/(m<sup>2</sup>K)

Thermal insulation of unit (unit size W x H: 1230 mm x 1480 mm)

U<sub>w</sub> value of 0.73 W/(m<sup>2</sup>K)  
U<sub>w</sub> value of 0.90 W/(m<sup>2</sup>K)

Sound reduction of glass  
R<sub>w</sub> value of glass of 36 dB  
R<sub>w</sub> value of glass of 42 dB  
R<sub>w</sub> value of glass of 45 dB  
R<sub>w</sub> value of glass of 50 dB

Sound reduction of unit  
R<sub>w</sub> value of 35 dB  
R<sub>w</sub> value of 44 dB  
R<sub>w</sub> value of 46 dB  
R<sub>w</sub> value of 48 dB

Burglar resistance

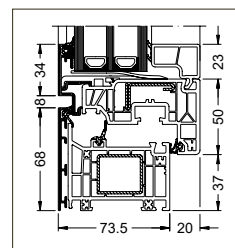
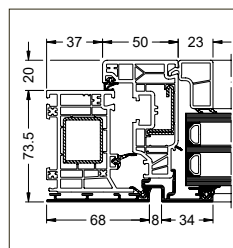
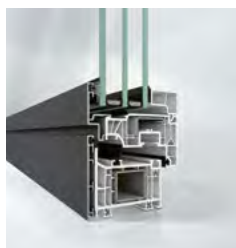
Up to class RC 2

Options

Barrier-free level or standard threshold (20 mm)  
Surface finish options  
Safety barrier  
Integrated ventilation solutions  
Can also be used as a window door  
Integralmaster  
Smart home compatible



All the latest information:  
[www.schueco.de/symbiotic-qr-en](http://www.schueco.de/symbiotic-qr-en)



## Schüco Living 82 MD window system

# Highly thermally insulated premium PVC-U series

- High-quality, weldable premium gaskets rolled in the factory for a closed corner design in the outer and vent frame
- High degree of flexibility, efficiency and process reliability during fabrication and installation
- Available in four profile colours (base material): white, cream, caramel and dark grey



### Technical data

#### Glass or infill thicknesses

Thermal insulation of glass  
with Psi value of 0.030 W/mK and  
 $U_g$  value of 0.5 W/(m<sup>2</sup>K)  
 $U_g$  value of 0.7 W/(m<sup>2</sup>K)  
with Psi value of 0.032 W/mK and  
 $U_g$  value of 1.0 W/(m<sup>2</sup>K)

Sound reduction of glass  
 $R_w$  value of glass of 36 dB  
 $R_w$  value of glass of 42 dB  
 $R_w$  value of glass of 45 dB  
 $R_w$  value of glass of 50 dB

#### Burglar resistance

#### Options

Outer frame: 16 mm to 54 mm  
Vent frame: 16 mm to 54 mm

Thermal insulation of unit (unit size W x H: 1230 mm x 1480 mm)

$U_w$  value of 0.74 W/(m<sup>2</sup>K)  
 $U_w$  value of 0.90 W/(m<sup>2</sup>K)

$U_w$  value of 1.1 W/(m<sup>2</sup>K)

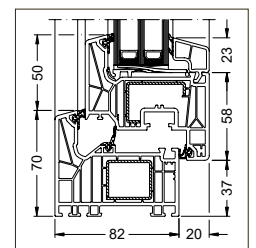
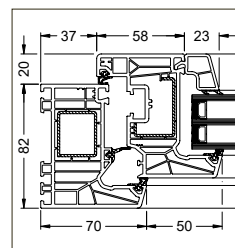
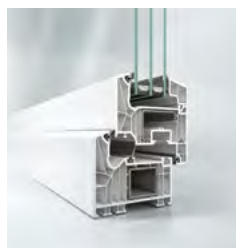
Sound reduction of unit  
 $R_w$  value of 39 dB  
 $R_w$  value of 43 dB  
 $R_w$  value of 45 dB  
 $R_w$  value of 47 dB

#### Up to class RC 2

Vent contours  
Barrier-free level or standard threshold (20 mm)  
Surface finish options  
Safety barrier  
Integrated ventilation solutions  
Can also be used as a window door  
Smart home compatible



All the latest information:  
[www.schueco.de/living-qr-en](http://www.schueco.de/living-qr-en)



## Schüco LivingSlide-e Panorama Design lift-and-slide system

# Automated premium PVC-U lift-and-slide door

- Lift-and-slide vent frames can be mechanically processed on CNC machines
- Selected main and supplementary profiles are supplied cut to the optimum length
- Pre-fabricated threshold kits minimise the fabrication time



### Technical data

Vent sizes

Maximum size W x H: 3215 mm x 2668 mm

Vent weights

Up to 400 kg

Face width of interlock section

106 mm

Thermal insulation of glass  
with Psi value of 0.030 W/mK and  
 $U_g$  value of 0.5 W/(m<sup>2</sup>K)  
 $U_g$  value of 0.7 W/(m<sup>2</sup>K)  
with Psi value of 0.032 W/mK and  
 $U_g$  value of 1.0 W/(m<sup>2</sup>K)

Thermal insulation of unit (unit size W x H: 4000 mm x 2300 mm)

$U_w$  value of 0.74 W/(m<sup>2</sup>K)  
 $U_w$  value of 0.89 W/(m<sup>2</sup>K)

$U_w$  value of 1.1 W/(m<sup>2</sup>K)

Sound reduction of glass

$R_w$  value of glass of 33 dB  
 $R_w$  value of glass of 36 dB  
 $R_w$  value of glass of 42 dB  
 $R_w$  value of glass of 47 dB  
 $R_w$  value of glass of 50 dB

Sound reduction of unit

$R_w$  value of 33 dB  
 $R_w$  value of 36 dB  
 $R_w$  value of 39 dB  
 $R_w$  value of 43 dB  
 $R_w$  value of 45 dB

Burglar resistance

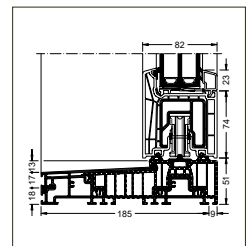
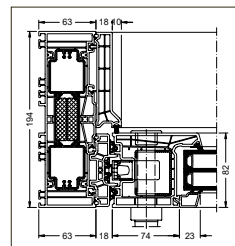
Up to class RC 2

Options

Barrier-free level or standard threshold (20 mm)  
Panorama fixed light  
Automation  
Schüco SmartClose  
Schüco SoftLift  
Schüco SoftHandle  
Surface finish options



All the latest information:  
[www.schueco.de/livingslide-qr-en](http://www.schueco.de/livingslide-qr-en)



## Janisol HI door system

# Efficient burglar resistance in RC 2

- Burglar resistance can be achieved with just a few additional components
- Latch-and-bolt lock for leaf heights of up to 2300 mm, with top locking point for a leaf height of up to 3000 mm
- Adjustable strike plates for easy configuration



### Technical data

Glass or infill thicknesses

Outer frame: 24 mm to 57 mm  
Leaf frame: 24 mm to 57 mm

Clear opening dimension

Maximum size W x H:  
1360 mm x 2992 mm (single-leaf), 2740 mm x 2992 mm (double-leaf)

Thermal insulation glass  
with Psi value of 0.031 W/mK and  
 $U_g$  value of 0.5 W/(m<sup>2</sup>K)  
 $U_g$  value of 0.7 W/(m<sup>2</sup>K)  
 $U_g$  value of 1.0 W/(m<sup>2</sup>K)

Thermal insulation of unit (unit size W x H: 1230 mm x 2180 mm)

$U_d$  value of 0.9 W/(m<sup>2</sup>K)  
 $U_d$  value of 1.0 W/(m<sup>2</sup>K)  
 $U_d$  value of 1.3 W/(m<sup>2</sup>K)

Sound reduction of glass  
 $R_w$  value of glass of 49 dB

Sound reduction of unit  
 $R_w$  value of 45 dB

Burglar resistance

Up to class RC 3 – with panic function

Material

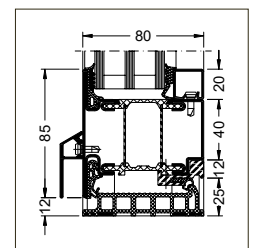
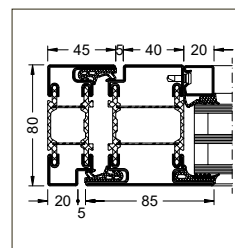
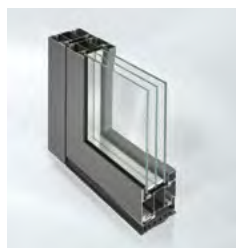
Steel

Options

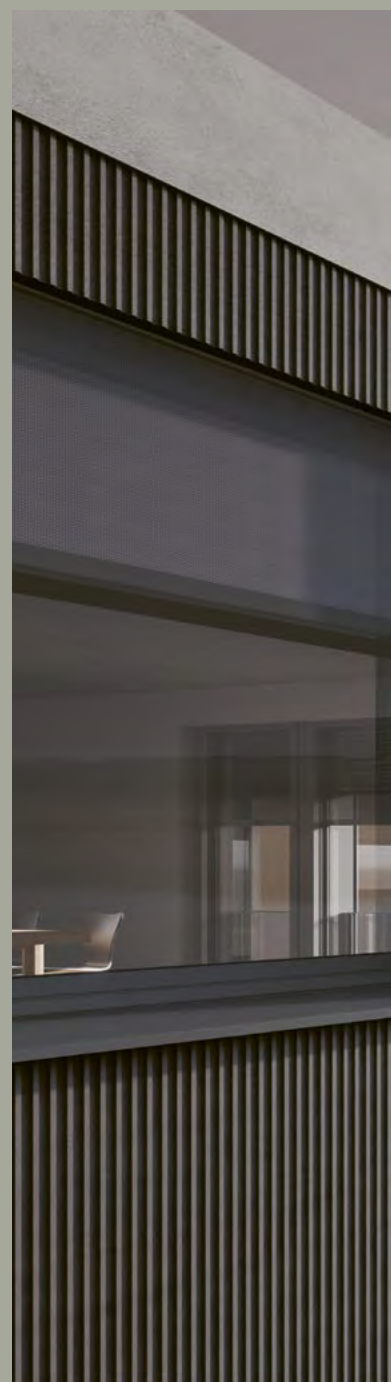
Also available as a sheet metal clad door, flush-fitted on both sides  
Suitable for use as an insert unit in mullion/transom façade systems



All the latest information:  
[www.schueco.de/janisol-hi-tueren-en](http://www.schueco.de/janisol-hi-tueren-en)



<b>Topic</b>	<b>70</b>
<b>Products</b>	
<b>Schüco aluminium systems</b>	<b>74</b>
<b>Schüco PVC-U systems</b>	<b>76</b>



# Schüco Perfect





# All-in-one system for windows and sliding doors



## High process reliability, quick and easy installation, 100% cross-trade: This is the promise from Schüco Perfect, the reliable complete solution for windows, patio doors and lift-and-slide doors.

Schüco Perfect promises maximum flexibility with maximum standardisation and ensures that a building project is cost-effective.

**T**he principle of Schüco Perfect is easily explained: picture a modular system with which you can perfectly close each opening in the building structure with windows or sliding doors. The area of application ranges from residential homes to commercial buildings and even special industrial applications, and the system can be used in both newbuilds and renovations. The modular system from Schüco Perfect features a range of attractive additional components such as sun shading and a flyscreen, which you can offer to your customers to meet any individual requirement.

### Everything works in harmony

Add-ons are easily connected to the window or sliding door, and always in the same way. Even replacing or retrofitting components is straightforward as they are always installed in the same way. In the event of a conversion, for example, an external blind can be replaced with a roller shutter, or vice versa. The same colour scheme for the units ensures a uniform appearance. You can offer and install this for your customers completely on your own, without any additional interfaces.

### Installation in around ten minutes

Schüco Perfect is supplied prefabricated and can therefore be installed directly on site. The system's cross-trade installation only takes around ten minutes. This optimises the process and ensures that your construction projects are cost effective. The complete solution is currently available as a window and sliding system – as Schüco AWS 75.SI+ Perfect and Schüco ASE 60/80.HI Perfect, made from aluminium, and as Schüco Living 82 MD Perfect and Schüco Living-Slide Perfect, made from PVC-U.



**Find out more**  
All the latest information  
about Schüco Perfect:  
[www.schueco.de/perfect-en](http://www.schueco.de/perfect-en)

## Tested modular system

Schüco Perfect is comprised of popular additional components that can be selected individually and combined. All of them can be replaced and retrofitted. The colour and surface structure of all add-ons selected perfectly match the window and sliding systems.

### Sun shading

From transparent to opaque: an external blind (for targeted daylight control and complete black out), a roller shutter and textile Zip Design Screen sun shading (for high performance and weather and wind resistance).



### Floor seal

Functional design: choose between a stylish window sill and a level threshold with drainage channel. A version with a 20 mm threshold is also available. The patented Schüco Perfect drainage system reliably bridges all the gaps between trades.



### Flyscreen

Insects remain outside, fresh air is let in: the flyscreen can be installed either as a vertical roller blind or as a horizontal pleated blind.



### Safety barrier

Safe and aesthetic: Schüco Perfect offers safety barriers in an integrated glass or balustrade design.



Modern, high-quality, timeless: Schüco Perfect stands out in every configuration. This is ensured by the particularly narrow face widths, maximum glass areas and the uniform appearance of the complete solution. The minimalist window sills can be attached without the need for additional screws.

**First and foremost, Schüco Perfect promises process reliability, as the tested modular system simplifies planning and ensures reliable fabrication and installation.**

## Schüco Perfect AWS 75.SI+ window system

# Merging the entire system into one unit

- Identical attachment details for different configurations of the Schüco unit make the planning of the building project more simple and reliable
- Process reliability: with simple planning and installation right through to after sales services
- Everything from a single source, no gaps between trades



### Technical data

Glass or infill thicknesses

Outer frame: 18 mm to 52 mm  
Vent frame: 18 mm to 61 mm

Thermal insulation of glass  
with Psi value of 0.031 W/mK and  
 $U_g$  value of 0.5 W/(m<sup>2</sup>K)  
 $U_g$  value of 0.7 W/(m<sup>2</sup>K)  
with Psi value of 0.036 W/mK and  
 $U_g$  value of 1.0 W/(m<sup>2</sup>K)

Thermal insulation of unit (unit size W x H: 1230 mm x 1480 mm)

$U_w$  value of 0.80 W/(m<sup>2</sup>K)  
 $U_w$  value of 0.94 W/(m<sup>2</sup>K)

$U_w$  value of 1.18 W/(m<sup>2</sup>K)

Sound reduction of glass  
 $R_w$  value of glass of 35 dB  
 $R_w$  value of glass of 42 dB  
 $R_w$  value of glass of 51 dB

Sound reduction of unit  
 $R_w$  value of 37 dB  
 $R_w$  value of 41 dB  
 $R_w$  value of 48 dB

Burglar resistance

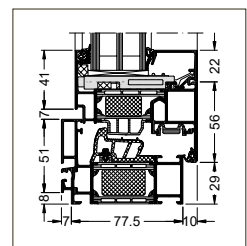
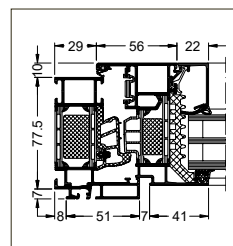
Up to class RC 3

Options

Barrier-free level threshold  
For use as a SHEVS window or as an insert unit in mullion/transom façade systems  
Optimised thermal insulation  
Ribbon window



All the latest information:  
[www.schueco.de/perfect-en](http://www.schueco.de/perfect-en)



## Schüco Perfect ASE 80.HI sliding and lift-and-slide system

# Reliable complete solution for every opening in the building structure

- Identical attachment details for different configurations of the Schüco Perfect unit make the planning of the building project more simple and reliable
- Process reliability even in the implementation of sliding systems – from planning, procurement and installation right through to after sales services
- Everything from a single source, no gaps between trades



### Technical data

Vent sizes

Maximum size W x H: 3500 mm x 3200 mm or 3200 mm x 3500 mm

Vent weights

Up to 500 kg

Face width of interlock section

40 mm, 102 mm or 112 mm

Thermal insulation of glass  
with Psi value of 0.031 W/mK and  
 $U_g$  value of 0.5 W/(m<sup>2</sup>K)  
 $U_g$  value of 0.7 W/(m<sup>2</sup>K)  
with Psi value of 0.036 W/mK and  
 $U_g$  value of 1.0 W/(m<sup>2</sup>K)

Thermal insulation of unit (unit size W x H: 5000 mm x 3000 mm)

$U_w$  value of 0.78 W/(m<sup>2</sup>K)  
 $U_w$  value of 0.95 W/(m<sup>2</sup>K)

Sound reduction of glass  
 $R_w$  value of glass of 45 dB  
 $R_w$  value of glass of 44 dB  
 $R_w$  value of glass of 50 dB

Sound reduction of unit  
 $R_w$  value of 40 dB  
 $R_w$  value of 41 dB  
 $R_w$  value of 43 dB

Burglar resistance

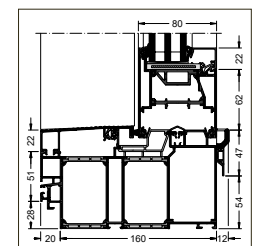
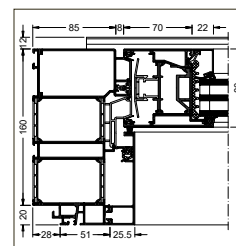
Up to class RC 3

Options

Manual operation  
Level threshold



All the latest information:  
[www.schueco.de/perfect-en](http://www.schueco.de/perfect-en)



## Schüco Living Perfect window system

# All-in-one window system

- Tested and certified complete system
- High degree of prefabrication – no individual parts required on site
- Components that can be upgraded and retrofitted: sun shading (external blind, roller shutter and zip screen) and flyscreens (vertical roller blinds or horizontal sliding pleated blinds)



### Technical data

Glass or infill thicknesses

Thermal insulation of glass  
with Psi value of 0.030 W/mK and  
 $U_g$  value of 0.5 W/(m<sup>2</sup>K)  
 $U_g$  value of 0.7 W/(m<sup>2</sup>K)  
with Psi value of 0.032 W/mK and  
 $U_g$  value of 1.0 W/(m<sup>2</sup>K)

Sound reduction of glass  
 $R_w$  value of glass of 36 dB  
 $R_w$  value of glass of 42 dB  
 $R_w$  value of glass of 45 dB  
 $R_w$  value of glass of 50 dB

Burglar resistance

Options

Outer frame: 16 mm to 54 mm  
Vent frame: 16 mm to 54 mm

Thermal insulation of unit (unit size W x H: 1230 mm x 1480 mm)

$U_w$  value of 0.74 W/(m<sup>2</sup>K)  
 $U_w$  value of 0.90 W/(m<sup>2</sup>K)  
 $U_w$  value of 1.1 W/(m<sup>2</sup>K)

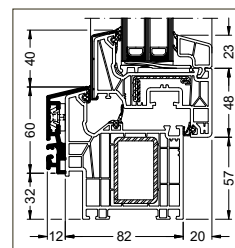
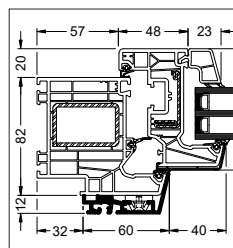
Sound reduction of unit  
 $R_w$  value of 39 dB  
 $R_w$  value of 43 dB  
 $R_w$  value of 45 dB  
 $R_w$  value of 47 dB

Up to class RC 2

Vent contours  
Barrier-free level or standard threshold (20 mm)  
Surface finish options  
Safety barrier  
Integrated ventilation solutions  
Can also be used as a window door



All the latest information:  
[www.schueco.de/perfect-en](http://www.schueco.de/perfect-en)



## Schüco LivingSlide Perfect lift-and-slide system

# All-in-one lift-and-slide system

- Tested and certified complete system
- High degree of prefabrication – no individual parts required on site
- Components that can be upgraded and retrofitted: sun shading (external blind, roller shutter and zip screen) and flyscreens (vertical roller blinds or horizontal sliding pleated blinds)



### Technical data

Vent sizes

Maximum size W x H: 3215 mm x 2668 mm

Vent weights

Up to 400 kg

Face width of interlock section

106 mm

Thermal insulation of glass  
with Psi value of 0.030 W/mK and  
 $U_g$  value of 0.5 W/(m<sup>2</sup>K)  
 $U_g$  value of 0.7 W/(m<sup>2</sup>K)  
with Psi value of 0.032 W/mK and  
 $U_g$  value of 1.0 W/(m<sup>2</sup>K)

Thermal insulation of unit (unit size W x H 4000 mm x 2300 mm)

$U_w$  value of 0.74 W/(m<sup>2</sup>K)  
 $U_w$  value of 0.89 W/(m<sup>2</sup>K)

$U_w$  value of 1.1 W/(m<sup>2</sup>K)

Sound reduction of glass

$R_w$  value of glass of 33 dB  
 $R_w$  value of glass of 36 dB  
 $R_w$  value of glass of 42 dB  
 $R_w$  value of glass of 47 dB  
 $R_w$  value of glass of 50 dB

Sound reduction of unit

$R_w$  value of 33 dB  
 $R_w$  value of 36 dB  
 $R_w$  value of 39 dB  
 $R_w$  value of 43 dB  
 $R_w$  value of 45 dB

Burglar resistance

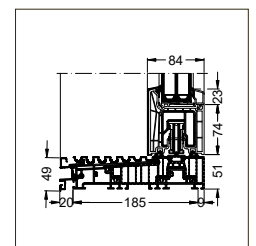
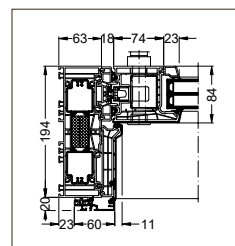
Up to class RC 2

Options

Barrier-free level or standard threshold (20 mm)  
Panorama fixed light  
Automation  
Schüco SmartClose  
Schüco SoftLift  
Schüco SoftHandle  
Surface finish options



All the latest information:  
[www.schueco.de/perfect-en](http://www.schueco.de/perfect-en)



<b>Topic</b>	<b>80</b>
<b>Products</b>	
<b>Schüco machinery</b>	<b>82</b>



# Automation



# Automation for greater efficiency in the workshop

Automation in metal construction is a decisive step for your company to aid survival in an increasingly competitive market.



**A**utomation in metal fabrication is no longer an optional luxury. It is a necessity, in order to remain competitive and successful in the long run within a rapidly changing market. It offers economic benefits, improves the quality of the products, optimises production processes and contributes to the safety of workers. Using our comprehensive market experience and profound knowledge of the systems, we take your fabrication processes to a whole new level. Our individual workshop consultations develop a customised layout, which is perfectly tailored to your needs. You get exactly what you really need, whether that is more flexibility, increased production capacity or simply improved planning in your fabrication process.

#### **Increase productivity, decrease costs**

Automated systems enable significantly higher process reliability compared to manual working processes. An impressive example of this is the Schüco CC 800. It punches a frame every 70 seconds. Other machines can also work around the clock if required, ensuring continuous production. This leads to a substantial increase in overall production and makes it possible to handle larger volumes of orders. Even the smallest automation solutions, like our specially developed solutions for the production of locking bars, can make a significant difference and contribute to a considerable increase in efficiency.

#### **Counteract the shortage of skilled workers**

Investment costs for automation technology may appear high, but they pay off in the long

term. Automation reduces the amount of workers required to carry out repetitive and simple tasks, which can help in reducing labour costs. Furthermore, the capacity of these workers that was previously tied up can now be put to good use elsewhere. Automation therefore helps to mitigate the shortage of skilled workers while maintaining productivity, for example, with the help of the Schüco VX 800 continuous feed machining centre. Schüco Frameline can also make everyday installation work easier. Workers are specifically relieved of physical strain and offered an ergonomic working environment.

#### **Sustainability and the conservation of resources**

Automated processes are characterised by high levels of efficiency regarding resource consumption. Thanks to accurate control and optimised labour, material consumption can be reduced and energy efficiency is increased.



#### **Find out more**

All the latest information about automation with Schüco:

[www.schueco.de/automation-metallbau-en](http://www.schueco.de/automation-metallbau-en)

**Skilled worker and labour shortages, demographic change, cost and time pressures: metal fabrication is facing a wide range of challenges. An investment in automation can remedy this and make your company more competitive.**

## Schüco CC 800 machine

# One machine for a variety of workshop layouts



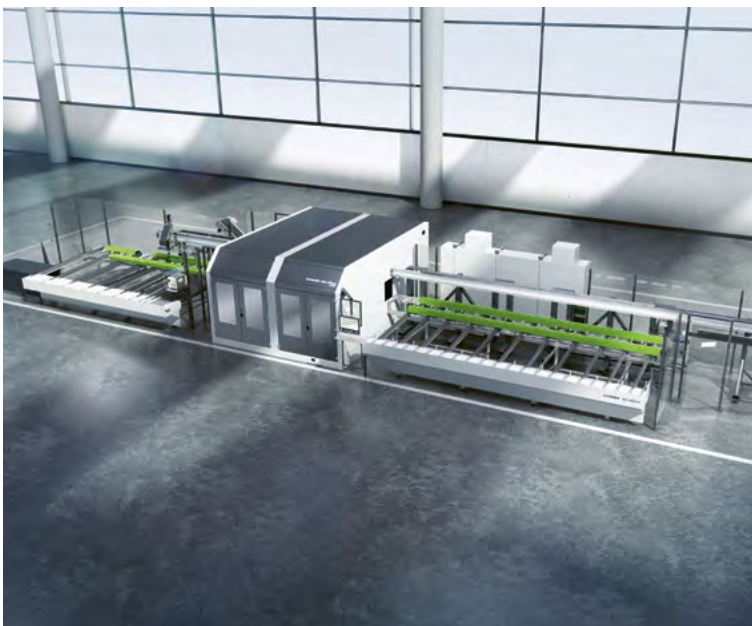
- Fully automated punching process for a wide variety of profile geometries
- High process reliability: a frame every 70 seconds
- Integrated, fully automated profile tolerance compensation



All the latest information:  
[www.schueco.de/cc800-en](http://www.schueco.de/cc800-en)

## Schüco VX 800 machine

# New continuous feed machining centre for profile preparation



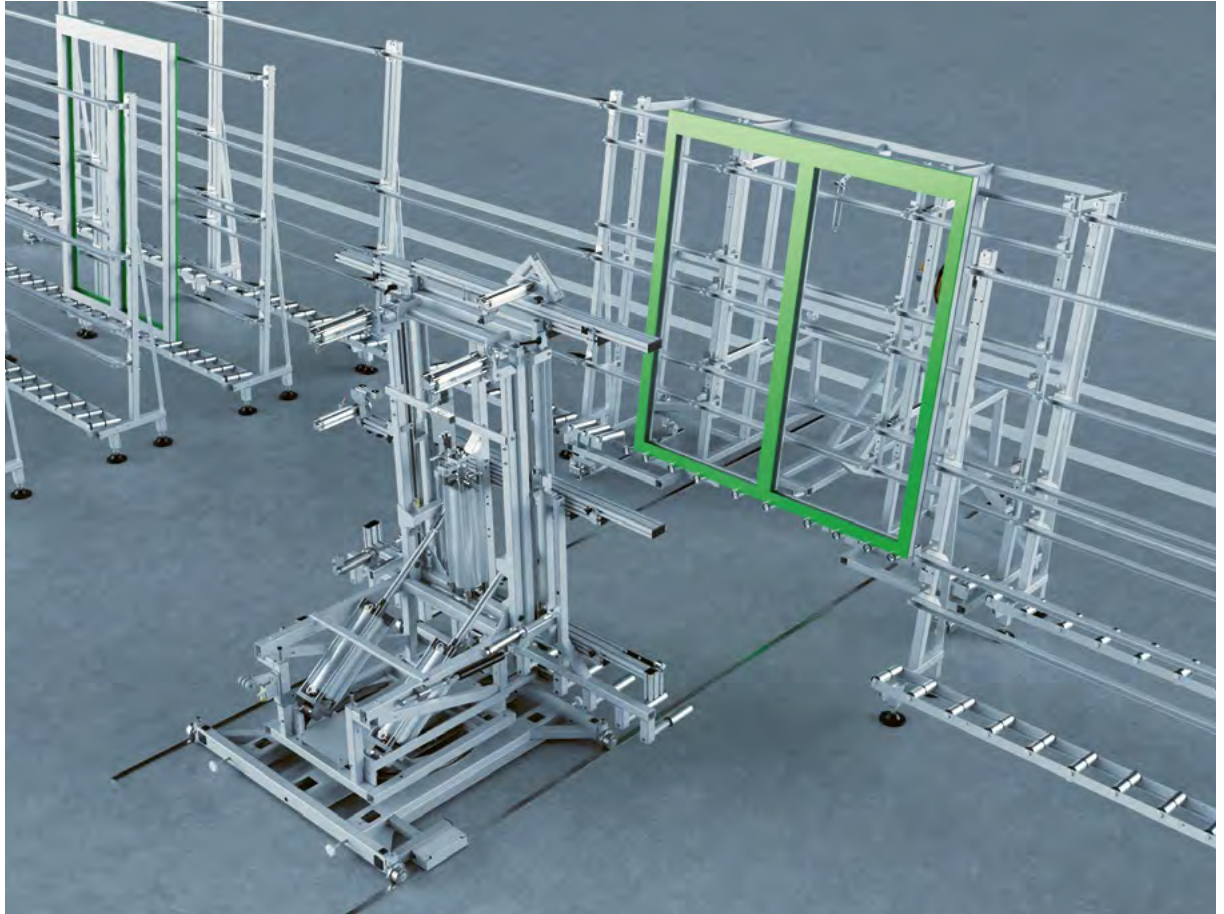
- The combination of cutting and 360° profile processing increases productivity
- SmartGrip system: fully automated positioning of the clamps without the additional set-up time for manual support blocks
- 20-slot in-line magazine for seamless, autonomous production



All the latest information:  
[www.schueco.de/vx800-en](http://www.schueco.de/vx800-en)

## Schüco Frameline intralogistics concept

# Everything flowing smoothly for future-proof fabrication



Frameline is our innovative solution for pioneering unit installation. Make your fabrication free of waste and adapt all aspects to meet your individual needs. Regardless of whether you are a small manufacturer or a large production company, Frameline offers the perfect fabrication layout for companies of any size.

Our intelligent solution for an optimum material flow helps you to counteract the increasing shortage of skilled workers. Thanks to Frameline, even heavy or large units can be ergonomically processed, rotated, transported and completed by just one person. This significantly increases the efficiency of your production line.

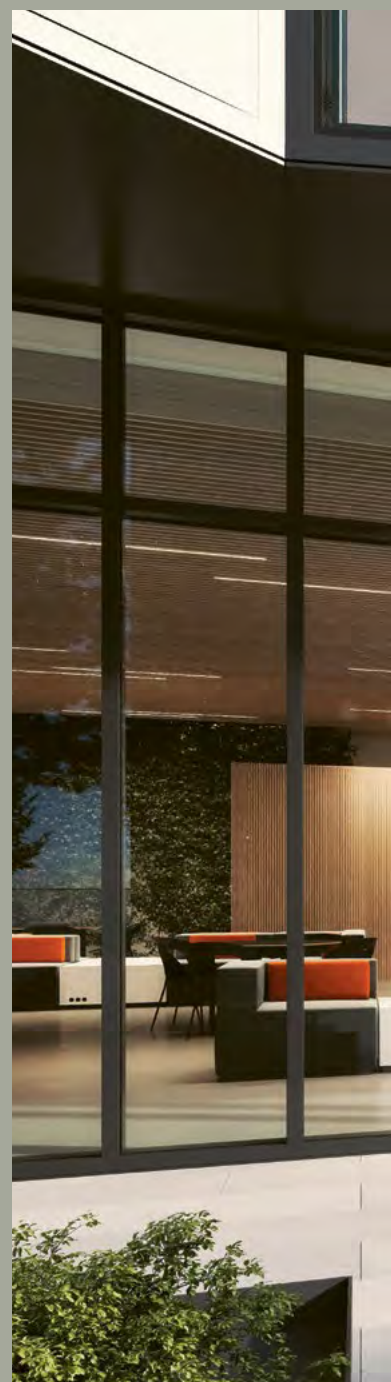


All the latest information:  
[www.schueco.de/frameline-en](http://www.schueco.de/frameline-en)

- Optimum material flow minimises wastage
- Heavy or large units can be ergonomically handled by just one person
- Optimised in-house transport of the frames results in greater organisation and structure during installation

**Products**

<b>Schüco aluminium systems</b>	<b>88</b>
<b>Schüco PVC-U systems</b>	<b>94</b>

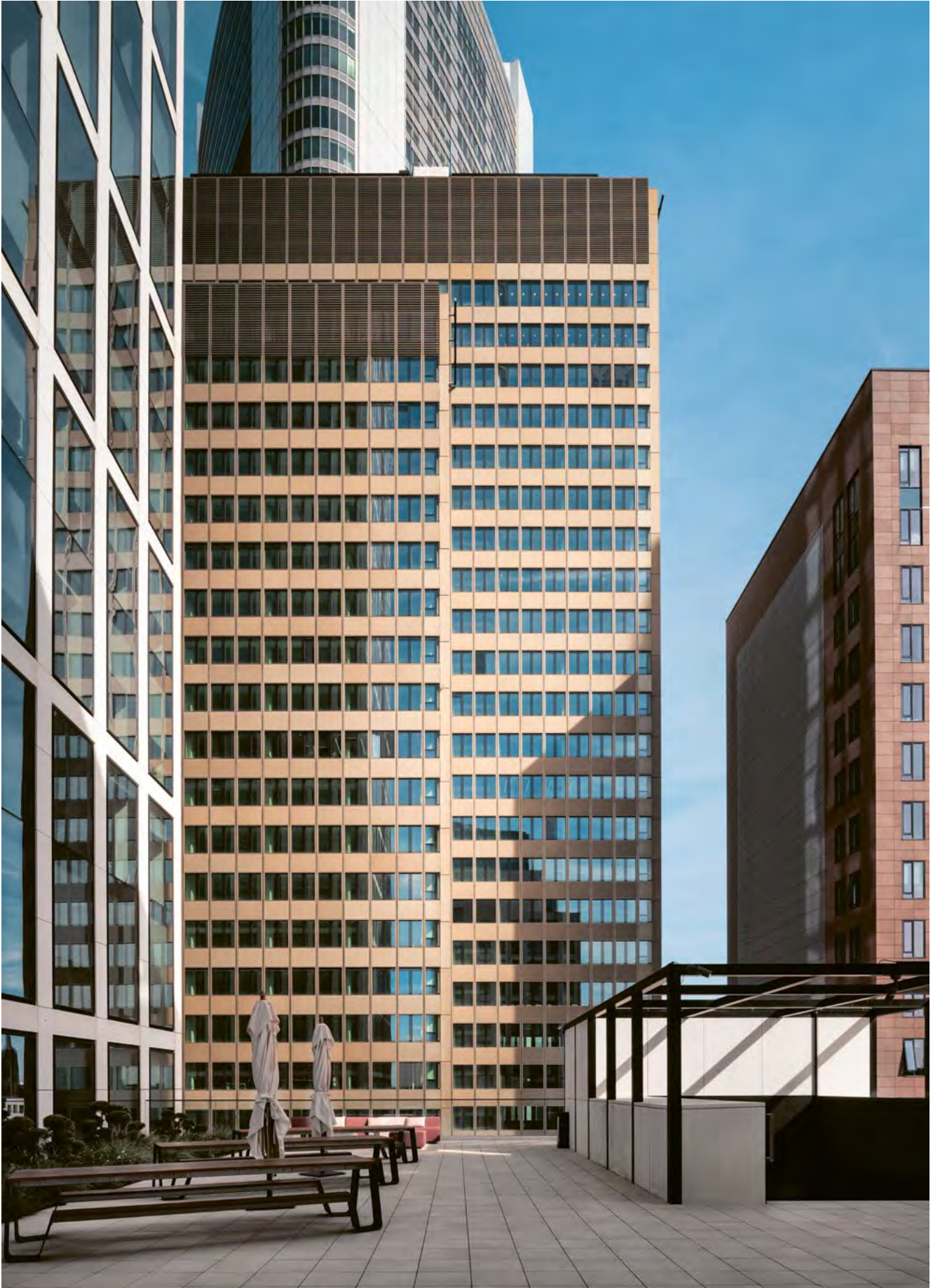


# Features



# Products for every requirement

**Regardless of whether your project is a large commercial building or a single family home – Schüco can offer you the right products for any project type. Our systems set standards in efficiency and sustainability, while offering you state-of-the-art solutions to meet any requirement. Discover our pick of the current highlights on the following pages.**



Global Tower, Frankfurt, Germany, © Henning Krefit

## Schüco AF UDC 65 façade system

# Unitised façade with slimline profile face widths for a slender appearance

- A high degree of prefabrication in the workshop ensures fabrication in any weather with high machining quality and easy-to-calculate costs
- Picture frame appearance with narrow face widths, corner cleats and rolled isolator
- Horizontal butt joint with a profile face width of 65 mm: to accommodate an expansion of +/- 10 mm



### Technical data

Glass or infill thicknesses

40 mm to 64 mm

Thermal insulation of glass

Thermal insulation of unit  
On request

Sound reduction of glass

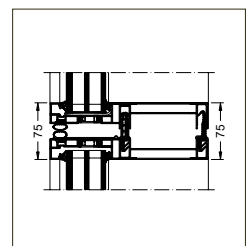
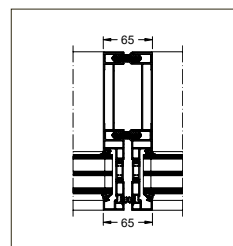
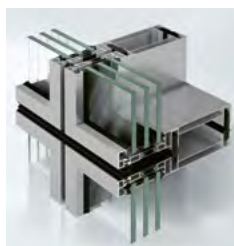
Sound reduction of unit  
On request

Burglar resistance

On request

Options

Single or double module width available  
Design option with framed look  
Different unit divisions created using vertical, horizontal or cruciform glazing bars



## Schüco AD UP 75 Commercial door system

# Functional commercial doors subject to heavy use

- Low level of complexity for simple installation and efficient work processes
- Targeted portfolio meets the relevant requirements of the large commercial projects
- Economic and customised solutions thanks to the double-shell composition of the leaf profile (3-chamber leaf)



### Technical data

#### Glass or infill thicknesses

Thermal insulation of glass  
with Psi value of 0.031 W/mK and  
 $U_g$  value of 0.5 W/(m<sup>2</sup>K)  
 $U_g$  value of 0.7 W/(m<sup>2</sup>K)  
with Psi value of 0.036 W/mK and  
 $U_g$  value of 1.0 W/(m<sup>2</sup>K)

Sound reduction of glass  
 $R_w$  value of glass of 36 dB  
 $R_w$  value of glass of 43 dB  
 $R_w$  value of glass of 46 dB

#### Burglar resistance

#### Options

#### Glass and insert panel infills: 8 mm to 51 mm

#### Thermal insulation of unit (unit size W x H 1230 mm x 2180 mm)

$U_d$  value of 1.1 W/(m<sup>2</sup>K)  
 $U_d$  value of 1.2 W/(m<sup>2</sup>K)

$U_d$  value of 1.4 W/(m<sup>2</sup>K)

#### Sound reduction of unit

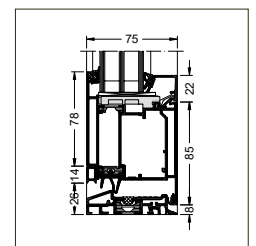
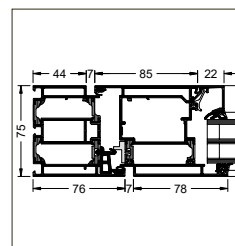
$R_w$  value of 38 dB  
 $R_w$  value of 41 dB  
 $R_w$  value of 42 dB

#### Up to class RC 3

Single and double-leaf doors  
Inward and outward-opening  
Barrier-free level threshold  
LED feature handle



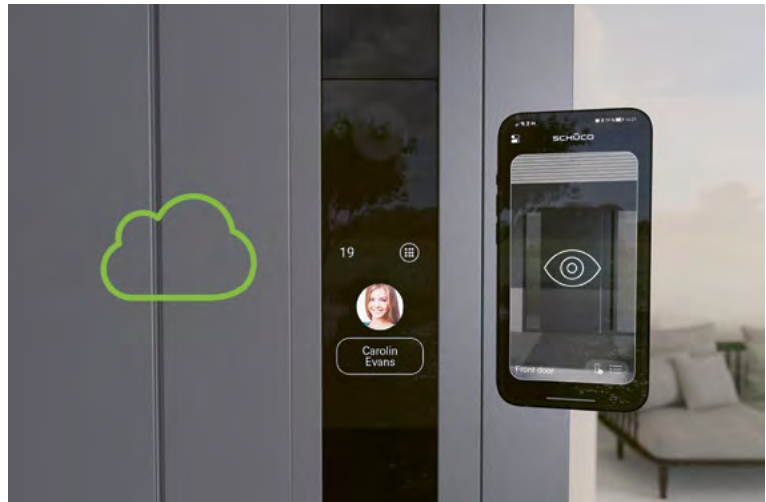
All the latest information:  
[www.schueco.de/ad-up-commercial-en](http://www.schueco.de/ad-up-commercial-en)



## Schüco DCS SmartTouch

# Intelligent door management system

- Quick to commission in just a few steps without prior training or knowledge of the system
- Separate casing for simple installation in the leaf or outer frame profile and for perfect weathertightness
- Efficient fabrication: rectangular profile milling allows standardised milling machines to be used



### Technical data

#### Features and benefits

As an intelligent door management system, Schüco DCS SmartTouch combines cutting-edge audio and video communication with integrated access control

Touchscreen with integrated HD camera, microphone, doorbell, night vision and brightness sensor

Simple and convenient configuration, commissioning, operation and control via the Schüco app

Can also be combined with other Schüco DCS modules

#### Area of use

For external use in large commercial or residential projects

#### Dimensions

W x H x D: 70 mm x 212 mm x 44 mm

#### Communication method

Cloud, WLAN, LAN, Session Initiation Protocol (SIP)

#### Protection rating

IP54

#### Installation type

Profile-integrated, surface-mounted or flush-mounted



All the latest information:  
[www.schueco.de/dcs-smarttouch-en](http://www.schueco.de/dcs-smarttouch-en)



## Schüco SafeGuard

# Locking system for convenience and security in the entrance area

- Simple installation: minimum machining. Easy installation due to mounting on the frame side, no cabling in the door leaf and therefore no cable link connector necessary
- Building site mode for easy door opening. Test kit for the workshop without commissioning via the app
- Plug-and-play: simple, reliable plug & play system thanks to pre-fabricated sockets



### Technical data

Features and benefits

Fully electronic locking system for keyless locking and unlocking

Locking mechanism is completely concealed

Convenient operation via an intuitive smartphone app: daytime release function, child lock, one-time access, break-in detection, access log and building site mode

Class RC 2 burglar resistance with only two locking points

Emergency battery pack with a minimum of 12 hours run time for smooth operation in the event of power failures

Can be combined with additional types of access control such as the Fingerprint system or code keypad

For use in the AD UP 75, AD UP 90 and AD UP 90.SI door systems

Area of use

External use in residential projects

Dimensions

W x H x D: 32.5 mm x 275 mm x 8.5 mm

Communication method

Bluetooth LE (no cloud solution)

Protection rating

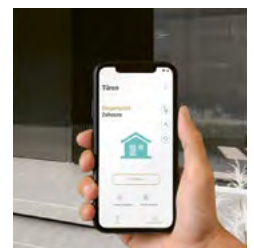
IP54

Installation type

Profile-integrated



All the latest information:  
[www.schueco.de/safeguard-en](http://www.schueco.de/safeguard-en)



# Schüco building automation

Digital networking in buildings offers virtually unlimited possibilities. Be it networked solutions for the luxury residential sector or for office and administration buildings – holistically integrated, networked and smart building components provide greater levels of comfort, higher levels of security and an efficient, sustainable building management system – for newbuilds and renovation projects.

## Doors

### Schüco Door Control System – EntryGo

The door can be opened via smartphone, RFID or code entry

### Schüco Door Control System – SmartTouch

This door management system combines high-quality audio and video communication with integrated access control.

### Schüco Fingerprint

Biometric access system with area sensor technology

### Schüco emergency exit control – profile-integrated, certified safety technology

Emergency exit control, including key-operated switch and emergency button

### Schüco SafeGuard – door locking system

Fully electronic system for locking and unlocking a door makes the lock cylinder redundant



All the latest information:  
[www.schueco.de/gebaeudeautomation-en](http://www.schueco.de/gebaeudeautomation-en)

## Sun shading

### Schüco Perfect control system

Sun shading blinds can be opened and closed using a wireless or cable-connected motor – controlled manually or automatically by means of a smart system



## Windows and façade

### **Schüco TipTronic – profile-integrated mechatronic fittings system**

Allows natural, energy-efficient ventilation at the touch of a button

### **Schüco DriveTec – surface-mounted drive system**

Perfect solution for easy retrofitting of Schüco aluminium windows with a wide range of opening types and unit sizes

### **Magnetic switch**

Concealed monitoring of windows, doors, sliding systems and toplights

### **SHEVS safety system**

Available as a compact control unit for stairwells or as a module control unit networked via interfaces for complex smoke extraction scenarios

### **Schüco Building Skin Control – one system for every unit**

A comprehensive platform for the integration, control and monitoring of mechatronic Schüco windows and sliding units

## Sliding units

### **Schüco TipTronic – profile-integrated mechatronic fittings system**

Allows quiet, convenient opening and closing at the touch of a button

## Ventilation

### **Schüco VentoAir – self-regulating mechanical ventilator for the window rebate**

Without having to operate the window, Schüco VentoAir ensures a basic air exchange

### **Schüco VentoFrame – self-regulating window ventilator integrated in the outer frame**

Perfect for ensuring controlled air exchange that is adapted to suit the room usage and that requires no user intervention

### **Schüco VentoFrame Asonic – window-integrated ventilation system with a high level of sound reduction**

Ensures fully-automated air circulation in buildings without letting in draughts or disruptive external noise through open windows

### **Schüco VentoTherm Twist – a decentralised, window-integrated ventilation system with incoming air, outgoing air and heat recovery.**

Controlled air exchange for specific rooms without opening the window – can be integrated into Schüco aluminium and PVC-U windows

## Schüco wireless sensor

# Smart monitoring of opening and closing



- Simple installation by means of a setting jig – directly during unit fabrication
- Straightforward retrofitting
- Suitable for all Schüco PVC-U window and door systems, regardless of fittings



New Nordic Headquarters E.On, Sjustjärnan, Malmö, Sweden © Bert Leandersson, Felix Gerlach

<b>Services</b>	<b>100</b>
<b>Schüco showrooms</b>	<b>104</b>

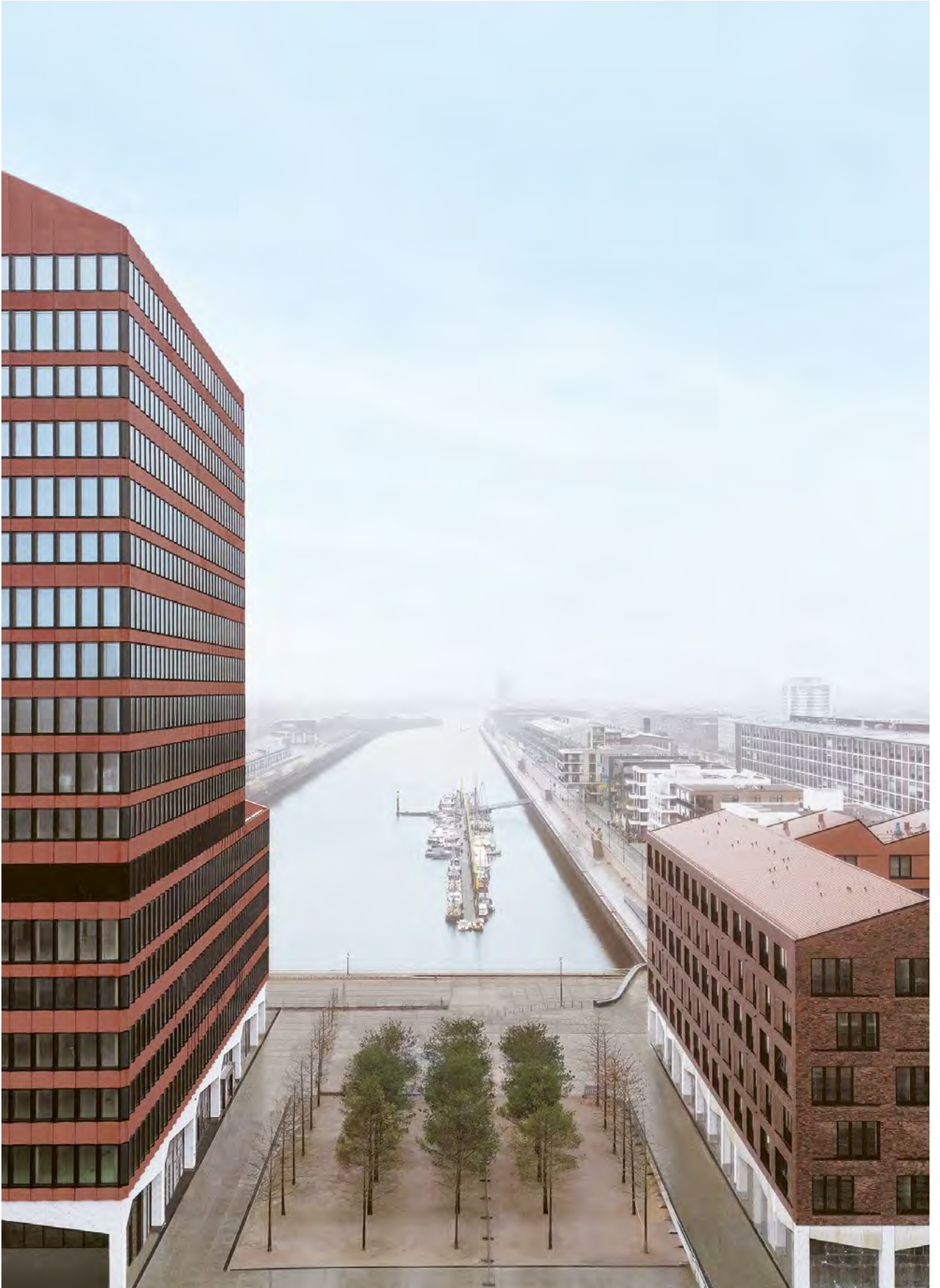


# Services



# **Our support for your construction project**

**Schüco supports you with a wide variety of services. These services are regularly enhanced and updated to meet your individual needs in the best way possible. On the following pages, you will find a selection of our latest offerings.**



Europahafenkopf Zechhaus, Bremen, Germany © cobearchitects

## Schüco Partner Consulting team

# Futuristic solutions for your company



- Efficient workflow and process optimisation – thanks to our measures, we can add more value to your company and promote employee satisfaction
- From developing logos to recruiting using social media – we support you with your corporate and recruitment marketing
- We provide individual solutions in many business areas to ensure sustainable success

## Schüco Marketing Center

# The digital platform for the easy creation of advertising content



- Simple: in just a few clicks, you can update your advertising materials with your logo – without any knowledge of marketing whatsoever
- Professional and individual: access a variety of templates such as image data, multimedia content and text
- Free of charge: an exclusive service for Schüco partners

## Schüco Coating Solutions GmbH & Co. KG

# Surface finishes “Made by Schüco”



- We offer powder coating for standard/ manual and special (so-called V8) Schüco profiles made from aluminium, as well as for customer material made from aluminium, e.g. sheets, edging, window sills etc.
- Profile shells and insulating bars are rolled together or joined to form highly insulated profiles. A major relief in times of skilled worker shortages

## Global Training / Schüco Academy

# Lifelong learning with the Schüco Academy



- Our hybrid training courses
- E-learning and clear, short videos
  - Intensive practical training in our workshops
  - Development of specialist knowledge for planning, construction, project management and company management
  - Further training for new employees and installers
  - Overview of the Schüco products

## Remote services

# Digitalisation in customer service



- Use of AR glasses to digitally support fabrication
- Support through our app “Fabrication Realtime Support” (FRS)
- Increased productivity of fabricators thanks to faster response times from our specialists – also available internationally in the near future



All the latest information:  
[www.schueco.de/remote-services-en](http://www.schueco.de/remote-services-en)

## Internet of Façades (IoF)

# Digital twin



- From 2025, Schüco products will be fitted with an IoF ID as standard to make the move towards a digital, transparent building envelope even more efficient
- The IoF ID is applied to fittings articles, in particular cavity-fitted gearboxes and locks
- Creation of an IoF ID with partner co-branding: by adding the individual company logo to the IoF ID, the unit can be used to increase brand awareness for the company



All the latest information:  
[www.schueco.de/iof-id-ku-en](http://www.schueco.de/iof-id-ku-en)

## Metal builds the future

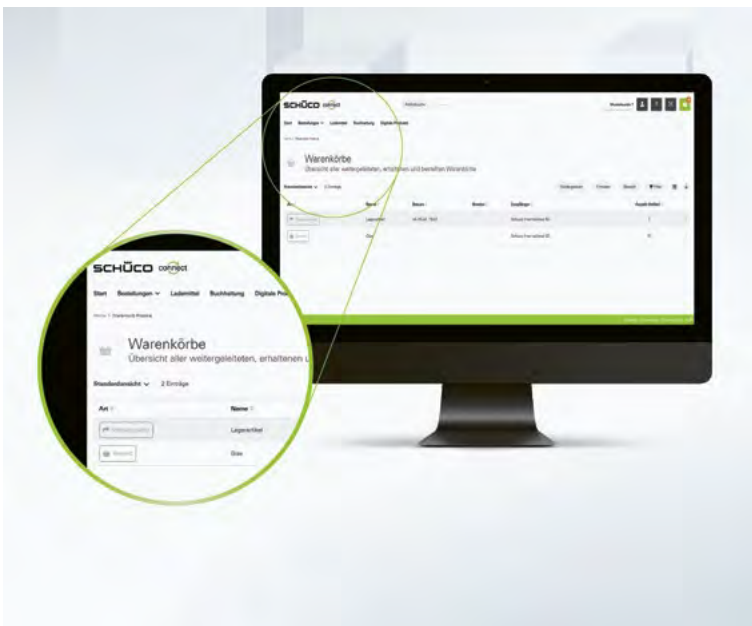
# Image and recruitment initiative for metal construction



- New website with improved application portal, including the applicant app Aivy
- “Metal builds the future” will become an innovation network in 2025: Exclusive workshops, discussions with the top industry employers, attractive benefits and media features

## Schüco Connect & EDI

# Digital orders at Schüco



- Schüco Connect: around the clock ordering with the in-house Schüco service portal
- Clearly set out and always completely up-to-date with the entire order history
- EDI: direct transfer of business documents between ERP systems
- The synchronisation function allows the automatic and time-saving comparison of orders and order confirmations



All the latest information:  
[www.schueco.de/connect-info-en](http://www.schueco.de/connect-info-en)

Experiences, information, inspiration

Visit one of our showrooms in Germany





You can experience the Schüco brand live and receive expert advice at all of the Schüco showrooms. Get to know the product range, comprehensive services and digital solutions offered by Schüco through numerous exhibits and samples. In addition to seminars and further training courses, you can also look forward to guest lectures from renowned architects and experts from the construction industry.

#### **Berlin**

Schlüterstraße 40  
10707 Berlin, Germany  
Telephone: +49 (0)30 887282-250

#### **Bielefeld**

Schücostraße 1  
33609 Bielefeld, Germany  
Telephone: +49 (0)521 783-822

#### **Düsseldorf**

FLOAT building  
Franziusstraße 6  
40219 Düsseldorf, Germany  
Telephone: +49 (0)211 44708-100

#### **Frankfurt am Main**

Nextower  
Thurn-und-Taxis-Platz 6  
60313 Frankfurt am Main, Germany  
Telephone: +49 (0)69 989728-100

#### **Hamburg**

Watermark Tower, HafenCity  
Überseeallee 10  
20457 Hamburg, Germany  
Telephone: +49 (0)40 696388-100

#### **Weißenfels/Leipzig**

Selauer Straße 155  
06667 Weißenfels, Germany  
Telephone: +49 (0)3443 342-0

#### **Wertingen/Munich**

Industriestraße 12  
86637 Wertingen, Germany  
Telephone: +49 (0)8272 82-0



All the latest information:  
[www.schueco.de/showrooms-en](http://www.schueco.de/showrooms-en)

# Imprint

## **Publisher**

Schüco International KG  
Karolinenstraße 1–15  
33609 Bielefeld, Germany  
[www.schueco.com](http://www.schueco.com)

## **Marketing**

Martin Rösler  
Michaela Hesse

## **Editor**

Mariska Dahlke  
Lisa Landwehrjohann  
Sina Möller  
Daniela Norkowski

## **Concept and design**

entdecker\*design  
[www.entdecker-design.de](http://www.entdecker-design.de)

## **Picture credits**

Copyright details: see images, all other  
images: Schüco International KG

## **Translation/Proofreading**

Translation Services Team,  
Schueco UK Ltd

## **Lithography**

comwedo GmbH, Bielefeld, Germany

## **Production**

Druckerei Vogl GmbH & Co. KG,  
Zorneding, Germany

P4620EN/03.2025 / Printed in Germany

We reserve the right to make changes  
and to correct errors. Products may  
differ from illustrations.

## We are here to help

### **Write to us:**

[service@schueco.com](mailto:service@schueco.com)

### **Follow us:**





